

BURNET PARK CAMPSITE

VISITOR INFORMATION GUIDE

(Doc. BP601 Rev. G: 16/10/2020) (Covid-19 Safety Plan version)

Welcome to Burnet Park Campsite. Please take a few moments to read this Guide. It will provide you with important information regarding your booking, and help make your stay at the park a safe and enjoyable one.

Before Your Stay:

- Make sure that you have completed and returned your Campsite Use Agreement / Facility Hire Agreement (and Public Liability certificate of currency where required); Covid-19 Safety Plan, and paid your camp fees and security deposit by the requested date.
- Make arrangements with the booking secretary for the collection and return of keys. (Normally, the key will be accessed from and returned to the key safe close to the property as per instructions provided).
Note: You will be issued with a Guest Master Key that will provide access to the areas of the site that you have booked.
- Make sure you have arranged to bring all necessary supplies, including toilet paper, tea-towels, washing-up supplies, cleaning/disinfecting supplies, hand-washing/sanitising supplies, protective equipment, and garbage bags. There are small village shops at Tyers and Glengarry for anything that you may have forgotten.

How To Get Here:

Please refer to the directions and route map attached to this Guide.

When You Arrive:

- Park neatly in the car parking area and do not obstruct the access track to the creek, or the gate to the adjacent paddock. Vehicles may be driven into the camping area, or the loading area in front of the building, to unload and re-load equipment, but should be kept in the parking area whilst in camp. Vehicles should be parked facing out towards the road to allow easy egress in case of emergency.
- Comply with all of the “Commencement” activities listed in the Covid-19 Safety Plan for your event.
- If staying in, or using, the building (Illangi):
 - Your Master Key will unlock the front entry door. It should remain unlocked during your stay, unless you leave the site unattended. You will need to turn the key in the lock from outside to re-lock it. For safety reasons, the door cannot be locked from the inside.
 - Un-bolt the emergency exit doors at the North & South ends of the corridor (these must remain un-bolted at all times whilst people are in the building).
 - Open the roller shutters to the windows of all rooms to be used. Handles for the shutter winders are located in the common room for use by the group leaders only. For safety reasons, do not leave the handles in the winders whilst children are in the rooms. Once the shutters are fully raised, the windows can be opened as

required to air the building. When opening the windows, use the last hole on the sash stay (i.e. the widest opening), so that the flyscreens can be closed without damaging the mesh.

- The remote control for the common room heater / a/c unit is located on the wall adjacent to the unit. Once the room has warmed up (or cooled down), the temperature should be set to 20° and the fan set to “night-time” for comfort and economic operation. Please do not allow children to operate the controls.
- There are panel heaters located in the passages. These will provide some additional warm air to the bedrooms if required. Do not allow children to operate these heaters.
- In the unlikely event of anything not being in working order or damaged when you arrive, please let us know straight away if it's urgent or a safety issue, and we'll attend to it as soon as possible. Otherwise please make a note and report it to us on leaving. Maintenance Report forms are located in the common room.

While You Are On Site:

Comply with all the “in progress” activities listed in the Covid-19 Safety Plan for your event.

Have a great time, but remember the following:

- Pets and domestic animals are not permitted on the campsite.
- The campsite and buildings are a smoke-free environment. If you must smoke, please take a stroll down the road, and dispose of your butts responsibly.
- The campsite is a drug and alcohol free venue.
- Be conscious of the need for fire safety, and be aware of any bans and limitations that apply to the area. Outdoor fires should be carefully tended, and supervised by an adult at all times. Please refer to Emergency Information below, for High Fire Risk and Code Red days.
- Rintouls Creek can be accessed by the gate and pathway at the West end of the site, or by the access track next to the parking area. Adult supervision is required for any activity around the creek. Please do not climb the creek banks.
- Please respect and care for our native wildlife – you will see lots of birds of various species, and you may be lucky enough to spot one of our resident wombats, goannas, possums or wallabies.
- Until further development of pathways and the hillside areas takes place, please restrict your activities to the levelled and cleared areas of the site. The hillsides are steep and overgrown, with lots of trip hazards (and stinging nettles!)
- Please help us by picking up any wind-blown branches, bark etc. You can use these on your camp-fire, or stack them neatly on the concrete slab in the camping area, for future use. (Don't throw them over the fence onto the creek banks!).

Before You Leave:

Comply with all of the “Conclusion” activities listed in the Covid-19 Safety Plan for your event, and:

Campsite:

- Return any site equipment used, to the store shed, in a clean, dry and tidy state.
- Clean the outdoor toilets; empty and clean sanitary bins and rubbish bin & replace bin liners; cover toilets with sacks provided. Leave a couple of toilet rolls. Ensure that the toilet block door is locked.
- Clean up the fireplaces; return unused firewood and stack neatly.

- Scour the campsite for rubbish, tent pegs etc.
- Take away all rubbish, left over foodstuffs etc.

Building (Illangi):

- Return all furniture and equipment to its original position.
- Bedrooms:
 - Vacuum carpets – (please empty the vacuum cleaner when done)
 - Lean mattresses on single beds or against the wall
 - Empty and wash all bins, replace bin liners
- Bathrooms:
 - Clean showers, toilets & hand-basins
 - Empty sanitary and rubbish bins, replace bin liners
 - Stand duck-boards upright
 - Sweep and wash floors
 - Leave a couple of toilet rolls.
- Kitchen:
 - Wash & dry all crockery and cutlery; and return to the appropriate drawers and cupboards, as labelled.
 - Clean microwave, fridge/freezer, & stove; empty kettle and urn.
 - Turn off and unplug all appliances except the fridge.
 - Take away all rubbish, recyclables, left over food etc, Clean bins and replace bin liners.
- Close all windows & flyscreens. Close the roller shutters using the winder handles, and return the handles to the container in the common room.
- Re-bolt the two end doors.
- Ensure all lights and power points (except for the fridge) are switched off.
- Ensure that the heating / ac unit in the common room, and panel heaters in the corridors, are switched off.
- Do not turn off the main power switch, or gas tank.
- Ensure that the front door is locked. (Turn the key fully in the lock from outside.)

General:

- Please fill in the visitors book located in the common room, next to the front door.
- Ensure that the store shed and equipment shed are locked, and padlock all gates securely.

Facilities Provided:

Indoor (Illangi):

Accommodation:	Sleeps up to 12 persons in Covid-19 mode – 6 bedrooms with a maximum of 2 persons in each. Mattresses and covers provided. BYO pillows, sleeping bags, blankets etc.
Kitchen:	Commercial oven, gas range & range hood, microwave oven, fridge/freezer, electric frypans, toasters, electric urn & jug, pots & pans, crockery & cutlery for 30 persons. BYO tea towels, detergents, cloths, scourers, & garbage bags.
Bathrooms:	Bathroom 1 has 2 showers, 1 toilet, & 3 wash-basins. Bathroom 2 (accessible) has 1 shower, 1 toilet & 1 wash-basin. Bathrooms are not gender-specific. BYO toilet paper, hand washing/sanitising supplies and paper towels.
Hot water:	Gas hot water service to bathrooms and kitchen
Heating:	Reverse cycle heating / cooling unit located in the common room, and panel heaters in passage-ways.
Telephone	There is no landline, but adequate reception for most mobile phones.

Outdoor (Campsite):

Camping areas:	Large, flat grassed areas with scattered shade.
Fireplaces:	Brick cooking fireplace available. Some firewood is available
Toilets:	2 drop toilets. Please keep lids closed. BYO toilet paper and hand washing supplies
Showers:	No shower facilities in campsite. Bathrooms in the building may be used, if booked for your visit, but you must clean them before departure.
Power:	There is no power or lighting in the camping area, other than solar lighting in the toilet block. Bring torches or lanterns for night time use.
"Tree House"	Approx. 4m x 4m raised platform for sleeping or activities. You'll need to bring or build a ladder and put up rope balustrades.
Equipment:	Some camping equipment and tents are available for use. BYO gas cooking equipment, pots, pans, cooking & eating utensils etc.

Emergency Information:

Total Fire Ban / High Fire Risk Days:

- You must not light fires or have any naked flame. Gas and spirit stoves may only be used inside a building or other enclosed space (caravan or camper van etc.).
- Comply with all directions given by emergency services personnel.
- If you decide to leave, do so as early as possible and inform police and fire brigade of your travel plans.

Code Red Days (for West and South Gippsland areas):

- You must pack up and leave the campsite as early as possible and:
 - Return to homes or go to Traralgon Civic Centre – Grey St, and register your presence.
 - Inform Police & Fire Brigade of your location.
 - Listen to ABC radio for information.

Emergency Phone Numbers:

Police, Fire Service, Ambulance:	000 or Mobile 112
Victorian Bushfire Information Line:	1300 240 667
Latrobe Regional Hospital	5173 8000
Poisons Information Line	131 126
Gippsland Water (water service provider)	1800 057 057
SP Ausnet (electricity network owner – lines & poles)	131 799
Energy Australia (electricity service provider)	133 466
Elgas (LP gas service provider)	131 161

Burnet Park Campsite Committee Contact Numbers:

The following members of Burnet Park Campsite Committee of Management may be contacted in the event of an emergency:

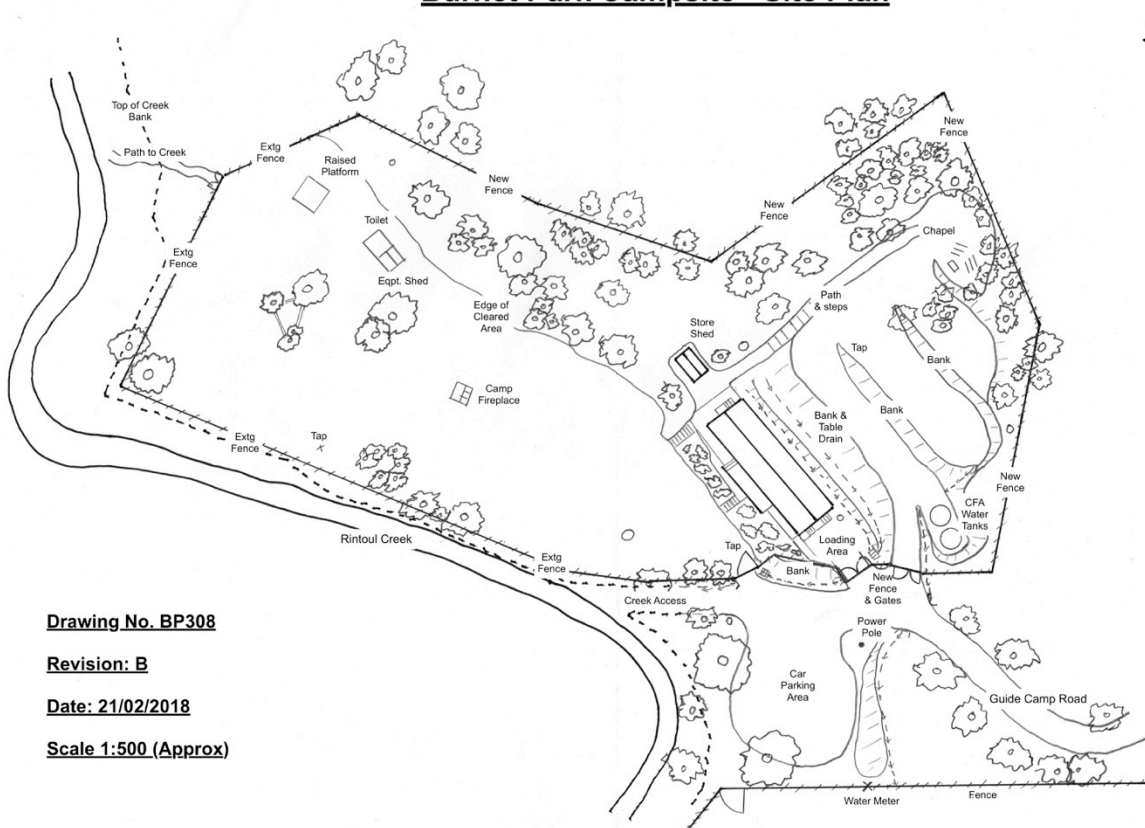
Linda Hall 0427 671 780

Burnet Park Campsite Booking Secretary:

For any enquiries prior to your event:

Dorothy Sturgess burnetparkbookings@gmail.com

Burnet Park Campsite - Site Plan



Drawing No. BP308

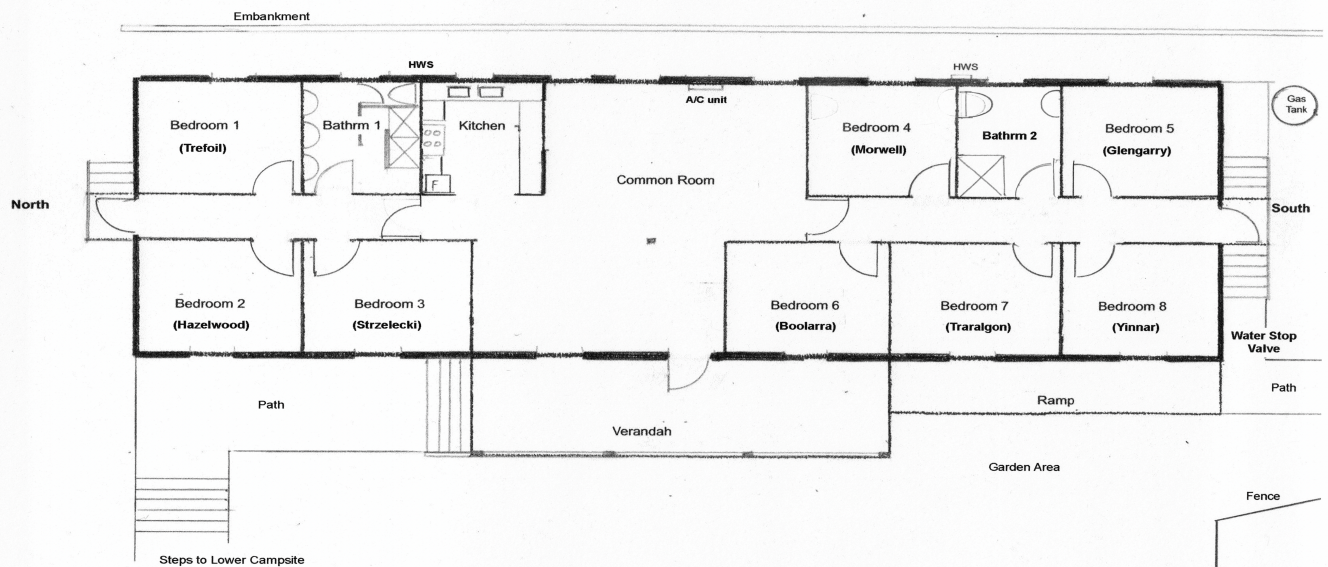
Revision: B

Date: 21/02/2018

Scale 1:500 (Approx)

Burnet Park - Accommodation Building - Floor Plan

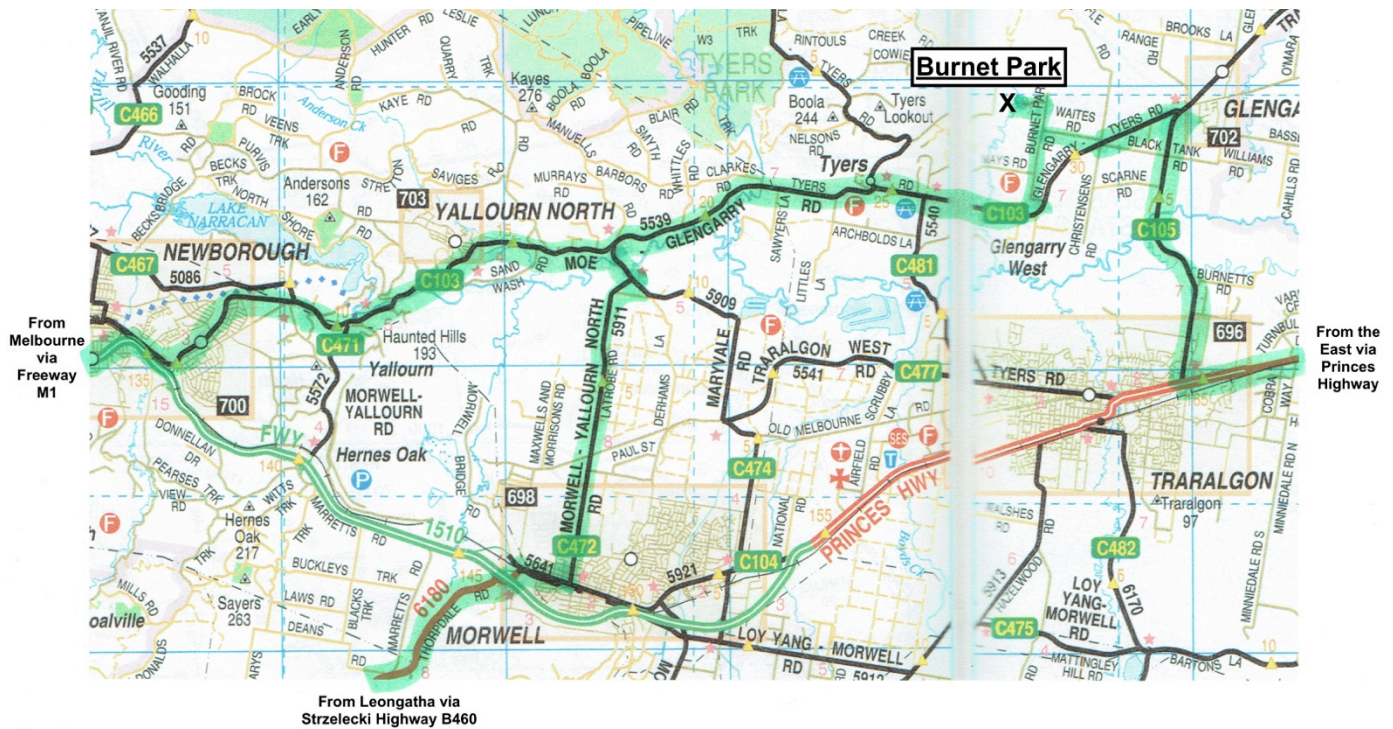
"ILLANGI"



Scale 1:100

Doc. BP309 Rev.C: 18/02/2019

Route Map and Directions



From Melbourne and the West via Freeway M1:

1. Take the exit from M1 to Yallourn North (C103)
2. Continue straight ahead through traffic lights (0.2 km from M1) John Field Drive (C103)
3. Continue straight ahead at next traffic lights Moe-Glengarry Road (C103)
4. Continue on C103 past power station on right & over Latrobe River Bridge
5. Continue past Yallourn North on left
6. At "T" junction 9.2km from M1, Turn right on C103 towards Tyers. Moe-Glengarry Road (C103)
(also called Brown Coal Mine Road)
7. Continue on C103 through Tyers, then past Tyers-Traralgon Rd (C481) on right
8. Turn left immediately after a farmhouse on a sweeping LH bend Burnet Park Rd (gravel road)
9. Negotiate sharp RH bend, then turn left after about 2.7km Guide Camp Road (gravel road)
10. The campsite is at the end of Guide Camp Road

From Mirboo North / Leongatha via Strzelecki Highway (B460):

1. Veer right at roundabout at end of B460, over M1 freeway, under rail bridge, continue to traffic lights.
2. Turn left at traffic lights (left filter) following signs to Yallourn Nth, over rail bridge, then turn right at next traffic lights (T junction). This is C104 (Morwell-Traralgon Rd).
3. Turn left at first roundabout, towards Yallourn North Morwell-Yallourn Nth Road (C472)
(also called Latrobe Road)
4. Proceed on C472 for approx. 7.5km
5. Turn left at T-junction after right hand bend Maryvale Road (C474)
(also called Tanjil East Rd)
6. Cross Toms Bridge, then turn right at T-junction Moe-Glengarry Rd (C103)
7. Continue from step 7 above

From the East via Princes Highway (A1):

1. Approaching Traralgon from the East on Princes Highway:
2. Turn right at 2nd traffic lights (next to Bunnings)(sign to Heyfield & Maffra) Traralgon-Maffra Rd (C105)
3. Proceed on C105 for 7.2km, going past Black Tank Rd (Don't turn left here despite what your GPS might say!)
4. Turn left at T-junction 7.2km after Highway Tyers-Glengarry Rd (C103)
5. Turn right after 2.2km Francis Road
6. Then turn immediately left Waites Road
7. Turn right at T-junction at end of Waites Road Burnet Park Rd (gravel road)
8. Turn left after about 700m Guide Camp Road (gravel road)
9. The campsite is at the end of Guide Camp Road.