

GIRL GUIDES
AUSTRALIA
VICTORIA

SNOOZERELLA 2024

Ready to launch your
Guide into a world of
wonder and discovery?

Join us for Snoozerella
2024 at TwistED
Science® Moorabbin!



Limited spots available. Register Today!





TABLE OF CONTENTS

- pg 1 |** Snoozerella Basics
- pg 2 |** What is TwistED Science®?
- pg 3 |** What might my Guide get up to at TwistED Science®?
What can my child expect at Snoozerella?
- pg 4 |** Sign-in & Sign-out procedures
Added Bonus!
- pg 5 |** Snoozerella Transport
How to have a great time!
- pg 6 |** Important information from TwistED Science®
- pg 7 |** Kit List
Health, First Aid & Quiet Spaces
Personal Medication
- pg 8 |** Mobile Phones & Devices
Supervision & Security
Cancellation Policy
- pg 9 |** Registration Guide
- pg 10 |** Balance Payment Instructions



SNOOZERELLA

2024

**PARENTS, GUARDIANS, GUIDES & VOLUNTEERS,
PLEASE CAREFULLY READ THE CONTENTS OF THIS BOOKLET BEFORE REGISTERING**

What is Snoozerella??

A sleepover for Girl Guides at TwistED Science®! With interactive exhibits with friendly materials, colour, design & space. The emphasis is on having the best time!

Who

Girl Guides aged 5 - 10 (at the time of the event)

Youth places are limited due to venue capacity. A waitlist will be available if the event is sold out! Register today!

Leaders wishing to attend must fill out the **Expression of Interest form**, due May 16.

Adult places are limited, & will be allocated once youth registrations have closed.

When

Saturday June 1 (4:45pm) - Sunday June 2 (9:00am)

Where

TwistED Science®

22-36 Bulli Street, Moorabbin

Cost

\$120 for Girl Guides **

\$30 for allocated Leaders

Cost Includes: TwistED Science® entry, all activities, accommodation, dinner, supper, breakfast & some surprise goodies!!

**** A 50% deposit & balance option is also available upon registration - on offer until Monday April 22nd.**

DEPOSITS ARE NON-REFUNDABLE

Full payment will be required 2 weeks prior to the event, Friday 17 May.

Please see the final page in this booklet for instructions on how to complete your balance payment.

You will also be sent a reminder 1 week prior to the final balance being due.

Youth registrations MUST CLOSE at 11.59 pm on 13 May

Register ASAP to avoid disappointment!

For event specific queries, please contact the Snoozerella Committee at snoozerella@guidesvic.org.au

For registration assistance after reading the registration guide (last page), please contact events@guidesvic.org.au



twisted[®]ED

What is science



"Here at TwistED Science[®] we thrive on curiosity, how things come to be, how they work, move & feel! Through interaction with our exhibits you can explore all the fun of science through play. Our exhibits invite interaction with friendly materials, colour, design & space. The emphasis is on fun! They ensure every person of every age, ability & culture can be included. We love science & our passion has brought you the best of all we know in one space for you to explore & share. This is a place for query, wonder, action & contemplation. We are very proud of what we have built for you. Come & visit, we would love to show you around!"

Learn more about TwistED Science[®] here <https://www.twistedscience.com.au/>





What might my science Guide get up to at

- Exclusive access to the venue for the duration of the event, with free time exploring the exhibit floor with hands-on, interactive science exhibits.
- A 20mins fully immersive, 360 degree movie called Earth's Wild Ride in the portable planetarium – the TwistED Science® Astrodome.
- A chance to get up close & personal with the insects in the Bug Room. Perhaps even an Insect Show!
- A 30mins Slime workshop in the upstairs science labs!

and to wind down the evening, alongside supper, perhaps a fun Science Trivia quiz!

What can my child expect at Snoozerella?

Snoozerella is a State shared sleepover experience for our 5-10yrs olds.

It is a terrific opportunity for our younger Guides to meet Guides from other Units across Victoria, develop social skills, be supported in learning age appropriate independence, trying new things, & of course having a TwistED-ly fun time!

Once Guides have signed in, they will be given a warm welcome & orientation of the venue, so they know where meals will be had, the location of bathrooms & where they can find the different offerings for the evening.

The Exhibit floor, Astrodome & Meet the Animals fun will kick off first. Guides will have the option of moving between the different areas, so they'll get to experience whatever they choose.

Dinner will run in two time slots, with two groups in each slot, alternating with a Slime Workshop session!

Guides will start settling down for the night in the upstairs area, setting up their sleeping bags, supported by each other & Leaders as required.

A light supper will also be on offer & maybe a fun science trivia!

Before going home, Guides will pack up their belongings, enjoy Breakfast & get ready to say goodbye to another year of Snoozerella fun! Don't forget your goodies as well!

**** Please note that the above is a draft structure (as at March 2024) & activities & exhibits on the night are subject to operational availability & TwistED Science® reserve the right to change their offerings at any time.**

Added Bonus!

We're excited to let you know that for Snoozerella registered Guides, Twisted Science® are offering one **FREE** child entry for a future visit!

(12 month validity - expiring June 2, 2025).

You won't need to do anything to take up this offer, & finer details about offer redemption & any Terms & Conditions will be made available in the final event information mailout, approximately 48hrs prior to the event.

There will also be some other goodies... but we'll keep that a surprise!

Arrival | Sign-in **

Arrival & Sign-In is between **4:45 - 5:00pm**.

- Please allow adequate time for travel, parking & the sign-in process. There will be approximately 120 Guides in attendance, so please support us in this process by arriving on time.
- There will be Snoozerella/Girl Guides Victoria signage to welcome you.
- Further detailed information & updates about the arrival & sign-in process will be distributed along with the health form prior to the event.

Guardians are required to sign in their child before departing.

They must:

- Submit their Health Form

*Health forms will be emailed to registered participants **no more than 48hrs prior to the event.***

- Submit any medications &/or health management plans (if applicable).

We ask that due to the large volume of Guides in attendance, Guardians say their goodbyes once Guides have signed in & entered the venue. There will be plenty of Leaders to help settle in the Guides & get them stuck into a great evening!

Guardians will not be able to access Twisted Science® throughout the duration of the event.

Sign-out **

Sign out is at **9:00am**.

- All Guides will be required to be signed out by their Guardian at the entrance/exit.
- After this time, all Guides will be in the sole care of their Guardian.

**** For safety & security reasons, late entries or early departures cannot be accommodated.**

Shuttle Bus

A Shuttle Bus, depending on interest levels, *may* be available from Highett Train Station to TwistED Science®.

A Guide Leader would greet Guides at the Station & assist them boarding the bus, with other Leaders chaperoning the short trip.

As part of registration, please express your interest in this service.

We will confirm *after* registrations have closed, whether there has been enough interest & whether the Shuttle Bus will go ahead.

Train

The closest train station is Highett Train Station.

Public Bus

The 822 Bus could be utilised from Nepean Hwy/Rowans Rd, a 5 mins walk east from Highett Train Station. Alight at Isabella St/Rowans Rd, the venue is then a 220 metre walk.

Other bus services operate on nearby main arterials such as Nepean Hwy, South Rd, Chesterville Rd & Wickham Rd.

Parking

TwistED Science® have over 100 car parks on site.

Unit/District/Region Transport

Whilst no formal regional transport options are in place for this year's event, please speak to your Unit, as the Region or District may organise something if there is adequate interest.

Look out for the "Science Museum" road signs upon approach to TwistED Science®!

To make sure we all have a safe & happy time...

- Always treat others as you would like to be treated.
- Follow any instructions given to you by TwistED Science® staff & the Girl Guides Victoria Snoozerella team.
- Be supportive of others who may be challenging themselves to try something new & feeling a bit scared.

Snoozerella is an event that ANY Victorian Guide aged 5 - 10 can attend, even if nobody else from their Unit is going! Adult places are limited, so your regular Guide Leader may not be able to join you, but there will be lots of other friendly Leaders who will be attending!

Important information from TwistED Science®...



no instructions policy

We are a little bit different to most science centres:

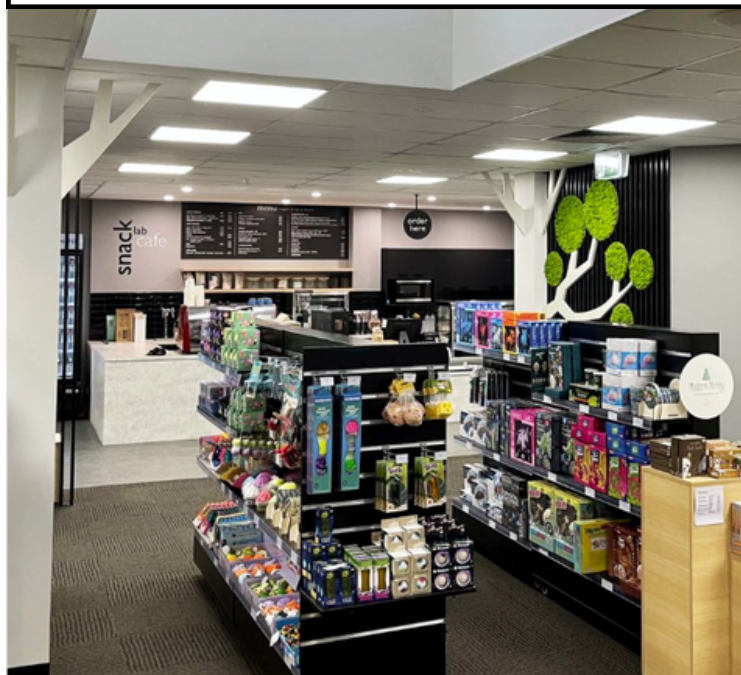
- All exhibits invite interaction & can be enjoyed without the barrier of age, ability or culture.
- Instructions are only included as a last resort & all exhibits are about doing & having fun!
- We encourage you to touch, explore, get hands-on & have a go at everything.
- This is a place where both kids & adults can play, learn & make memories together.

Our mission is to create a fun learning environment where children & families can be curious, create & connect with the world around them.

keeping you safe

Your safety is our first priority. We are extremely conscious of keeping everyone safe at TwistED Science® during your visit.

- We have 2 full-size roller doors opening to outdoors, fully fenced for child security but allowing a flow of fresh air into our exhibit areas.
- Air purifiers are on site in smaller rooms & child friendly sanitiser stations can be found throughout the centre.
- We thoroughly clean after each session.



gift shop & snack lab cafe

- The gift shop & cafe will **not** be open whilst Girl Guides have exclusive use of the venue.
- TwistED Science® re-opens to the public on the Sunday at 9am. Should you wish to peruse the gift shop, stick around after Snoozerella.

Kit List: What to pack!

Please pack light & make sure everything is clearly named!

Please wear your Girl Guide shirt to the event.

In a bag that Guides can manage themselves:

- Health form + any required medications – **no health form, no entry**

Health forms will be emailed to registered youth **no more than 48hrs prior to the event**

- Warm jumper
 - Warm pyjamas
 - Change of clothes including knickers & socks
 - Toothbrush, toothpaste, & face washer
 - Personal kit (lip balm, tissues, & sanitary items or pull ups as required)
 - Torch & spare batteries
 - Drink bottle full of water
 - BEDDING
 - Sleeping bag , pillow & blanket
 - Sleeping mat (eg Yoga mats or self inflating mat)
- NO LILOS OR MATS THAT REQUIRE BLOWING UP. NO STRETCHERS.**

Health & First Aid

There will be a fully qualified First Aider on duty at all times. Girl Guides Victoria relies on the information on a Guide's profile regarding medical & developmental support needs to plan staff ratios at events. Please ensure this information is up-to-date. The First Aid Team will phone Guardians to discuss health or developmental needs in the week prior to the event, if required. Any support needs not disclosed upon registration may not be able to be accommodated for.

Quiet spaces

A quieter section of the exhibit floor will be available should Guides need a bit of quiet time, but still want an interactive space.

Another sensory quiet space room is available throughout the evening.

All personal medication (except asthma puffers & Epipens) must be:

- Handed in upon sign-in (including pain killers like paracetamol & ibuprofen) to be returned at sign-out
- In its original packaging in a snap-lock bag clearly labelled with: Guide's full name & dosage instructions
- Itemised on the Health Form

Girl Guides Victoria volunteers are not permitted to issue any medication to Guides without the consent of their Guardian.

During registration, Guardians will be able to let the organising team know of any extra supports required for the event.



Mobile Phones & Devices

Girl Guide events are great opportunities to spend time with friends, get to know others, & enjoy all the amazing experiences on offer. We strongly encourage Guides & their Guardians to think about whether devices are needed for this event, & acknowledge that Girl Guides Victoria **cannot take responsibility for their safekeeping.**

If Girl Guides do take electronic devices, we recommend the following:

- When participating in activities, phones are put away.
- Permission is always sought before photos are taken of others.
- All social media posts are made with respect to our Girl Guide Promise to “respect myself & others”.

Event photographers will be posting to #guidesvic & #snoozarella. With the above guidelines in mind, Guides can also share photos so that we can follow all the fun!

Girl Guides Victoria cannot monitor & are not liable for any photos youth members take or share.

If you have any questions regarding this, or if there are specific legal issues regarding custody or safety with respect to photos, contact communications@guidesvic.org.au

Emergency contact details will be provided in the final email out to families along with the Health Form.

If your Guide carries a mobile phone, please refrain from contacting them during the event as this can cause homesickness for your child & other children.

Supervision & Security

Girl Guides attending Snoozarella will be supervised by Girl Guide Leaders who hold current Police & Working with Children Checks & have completed Child Safe training. In addition to Girl Guides Victoria volunteers, staff members of TwistED Science® will be in attendance throughout the event.

Cancellation Policy

Please refer to the Girl Guides Victoria website & the event registration page for our cancellation policy.

For those utilising the Deposit/Balance option, please note that the Deposit (\$60) is non-refundable.

REGISTRATION GUIDE

For event specific queries, please contact the LIC at snoozerella@guidesvic.org.au

If you require further registration assistance, please contact events@guidesvic.org.au

If you're newer to Guides or are needing a hand with registration, please follow the instructions below.

These are also repeated on the registration page.

HOW TO REGISTER |

- 1) Log in as the Guide wishing to attend the event. If you have multiple children, just like their renewals, you will need to complete this process for each child.
- 2) Locate 'Snoozerella 2024' event under the Events - Upcoming Events drop down.
- 3) Click the orange **Register Myself** button
- 4) Select your registration type - eg Youth (50% deposit or full payment) or Adult.
- 5) You will be presented with a series of additional questions. Please **Save Responses**
- 6) Youth members will also need to review/confirm their health details.
- 7) To complete registration, click the orange **Proceed to Checkout** button at the bottom of this page.
- 8) Payment is required to secure your registration. You will shortly receive an event registration confirmation email. Please check your junk mail.
- 9) For those utilising the Deposit/Balance option, please see the next page for Balance payment instructions.
A reminder that Deposits are non-refundable.

REGISTRATION GUIDE

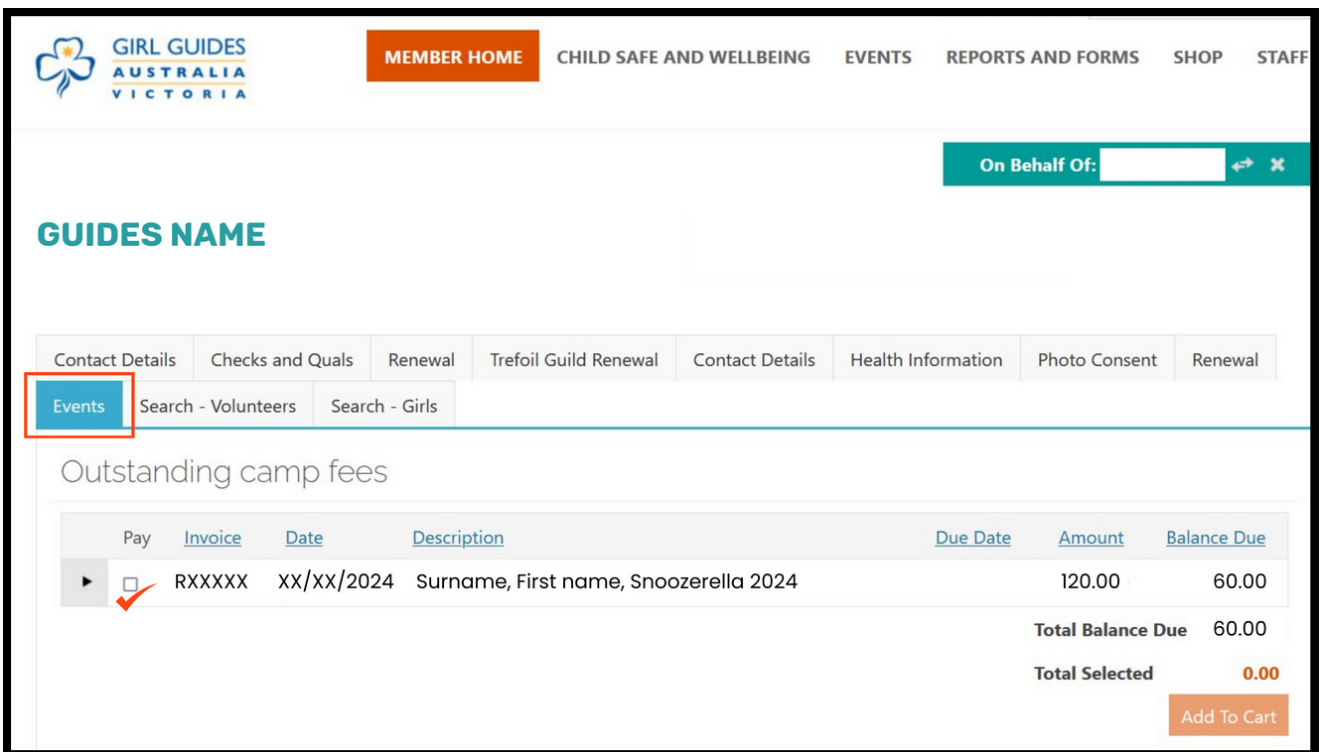
BALANCE PAYMENT INSTRUCTIONS

If you have utilised the Deposit & Balance payment option to secure your Snoozerella place, please follow the instructions below to complete your balance payment at any time. **

The balance payment is due no later than Friday May 17.

You can complete the balance payment at any time ** by logging into your Guides profile, & selecting the Events tab (as marked below) on the front MEMBER HOME page.

Do NOT select the Events tab at the top of the page.



Please note your Member Home page may look slightly different to this example.

The **AMOUNT** will display as \$120 & the **BALANCE DUE** will display as \$60.

Please tick the **PAY** box, Add To Cart & complete the payment.

** You will need to wait at least 24hrs after completing the initial deposit payment before the balance amount will appear in your Guides profile.

This is due to banking & batching reasons & updates that occur in our backend.

FULL BALANCE PAYMENT IS DUE NO LATER THAN FRIDAY 17 MAY.