



GIRL GUIDES
AUSTRALIA
VICTORIA

Britannia Park Campsite

General Information

For Members



For further information or a detailed quote contact Girl Guides Victoria:

Tel: 8606 3500

Email: britparkcampsite@guidesvic.org.au

Table of Contents

About	3
General Information	4
Indoor Accommodation	5
Broadhurst Lodge – 30 pax.	6
Brownie Cottage – 20 pax.	7
Guide House – 28 pax.	8
Thank You Chalet – 7 pax.	9
Outdoor Accommodation	10
Camping Equipment.....	10
Treehouses and Platforms	11
Meeting & General Activity Areas	11
Canobbio Cabin	11
BP Hut	12
BBQ's For Hire	12
Chapel and Quiet Place	12
Campfire Circle.....	12
Heritage Camping Museum	12
Activities:.....	13
Britannia Park Activities (no fee):	13
Britannia Park Activities (external fees apply):	13
Britannia Park "Adventurous Activities" (fees apply)	14
Possum Flyer	14
Crate Stacking	14
Low Ropes Course	14
Other Local Attractions:.....	14
Directions	15
General Conditions of Hire.....	16
Old Site Map.....	19

About

Britannia Park has been owned and operated by Girl Guides Victoria for 80 years. It is an 18 ha bush setting in the Yarra Valley, featuring wildlife in natural bush, grassed campsites and is located within close proximity to state forest reserves. The site accommodates 85 indoors and up to 500 outdoors.

The campsite is available for day visits, short stays or long stays. A range of activities are available on site and locally. The property features natural habitat and large open spaces for plenty of room to move! It is in close proximity to Healesville Sanctuary and the Yarra Valley.

Girl Guides Victoria (GGV) is a not-for-profit organisation with a strong tradition in supporting young people with a focus on girls and young women spanning 100 years and can work with schools and organisations to provide youth development experiences.

Everyone is welcome at Britannia Park!



School Groups, Community Groups, Non-profit Groups, Church Groups, Family Groups, Fitness and Recreation Groups, Health & Wellbeing Groups, Art Groups, Sporting Clubs, Guiding Groups, Scouting Groups, Special Events and Conference & Training Groups.

Britannia Park is an accredited campsite of the Australian Tourism Accreditation Program Camp/Adventure (Formerly Australian Camps Association).



Britannia Park Souvenir Badges:

Britannia Park swap badges are available at the Office at a small fee.

General Information

Britannia Park Volunteer Caretakers

On arrival the Group Leader must check in at the Office to submit their *Camper Register* receive any necessary safety briefings and collect keys. The Caretaker will be on duty from 4.00pm on day of arrival or earlier by prior arrangement.

Safety & Supervision

The general safety, supervision, first aid and the wellbeing of the campers is the responsibility of the school or organisation. The Caretaker/s are responsible for the safe functioning of the campsites including emergency procedures. Please follow instructions as necessary. Please inform the Caretaker of any incidents or emergencies.

Emergency Information

On arrival groups are briefed on camp rules, fire safety and evacuation procedures. A copy of the Britannia Park Emergency Response Plan is located in each accommodation area and around the park. The Britannia Park Emergency Response Plan is available on the GGV website (www.guidesvic.org.au).

Phones

A public phone is located outside the Office for general use. There is a telephone in each of the houses to contact the Office and the Caretaker will initialize a call on your behalf (charges apply). To contact emergency services only dial 000. The campsite has limited mobile phone coverage.

Heating

All houses have hydronic heating in all of the bedrooms and living areas.

Cleaning

Each group is responsible for cleaning and facilities should be left as they are found. Cleaning equipment is provided. Cleaning Procedure is in House Books and on Notice Boards. Leave furniture as you found it on arrival. Any additional cleaning required to be undertaken by caretakers or cleaning staff after booking completion will attract a Cleaning Fee.

Mattress protection is recommended (i.e. plastic sheets) for groups with special needs or younger guests to comply with current Health and Hygiene regulations. Cleaning charges will apply if mattress/blankets are left wet or soiled. Please notify the Caretaker if this occurs so we can deal with immediately. Please bring your own pillows. This will assist us with meeting all Health and Safety guidelines.

Breakages

If you have any breakages, damaged crockery or equipment during your stay, please let the Caretaker know. Breakages and damage must be paid for.

Parking & Unloading

Car parking for all visitors is in the designated parking lot adjacent to the Main Entrance (car and bus). The rear entrance and parking lot is for Broadhurst patrons only. There are no designated parking spots at each accommodation. Cars must be reverse parked in the car parks. Campers are to unload at the car park and proceed on foot.

If using large bus/coaches, please let the Caretaker know so they can suggest parking of bus/coaches and assist with unloading.

Indoor Accommodation

Accommodates up to 85 indoors.

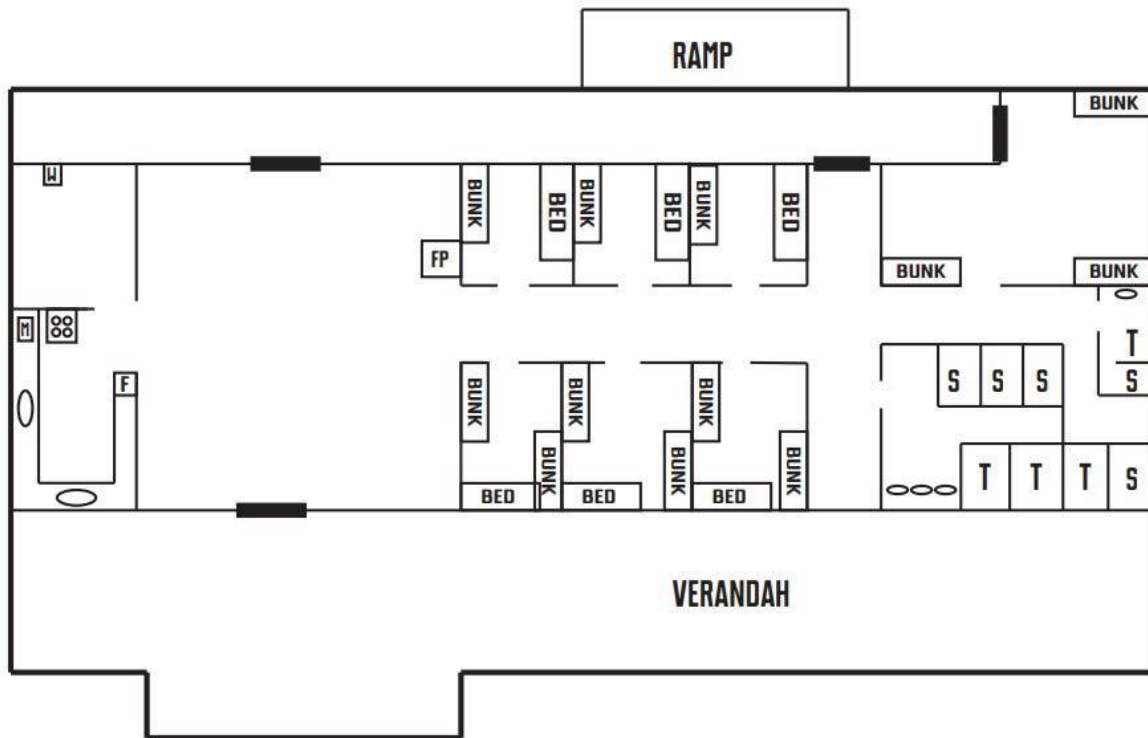
The Campsite is set on 18 Hectares in Tranquil Valley adjacent to Yarra Ranges National Park. Several accommodation buildings have been constructed over the years. *Guide House* and *Brownie Cottage* were constructed circa 1910, *Thank You Chalet* was completed in 1971 and *Broadhurst Lodge* was opened in 1985.

Bring your own bedding such as sheets, blankets, pillows, sleeping bags and towels.

To enable us to maintain our low rates our rooms are not serviced and you are required to leave each lodge in a clean and tidy state, ensuring rubbish is removed, rooms are vacuumed, bathrooms cleaned and electrical appliances switched off. Please note that some bunk rooms are “walkthrough” rooms which do not have internal doors.

Floor plans are not to scale and should be used as a guide only.

Broadhurst Lodge – 30 pax.



Facilities:



Seven bedrooms; three with two bunks and a single bed (5 pax each), three with one bunk and one bed (3 pax each) and one with three bunks (6 pax total).



There is a main bathroom with three showers and two toilets. There is second bathroom with toilet and shower and an additional toilet and shower to the rear of the building. The laundry comprises a trough and washing machine.



Kitchen is equipped with five-burner gas stovetop and oven, microwave, toaster, urn and fridge/freezer.



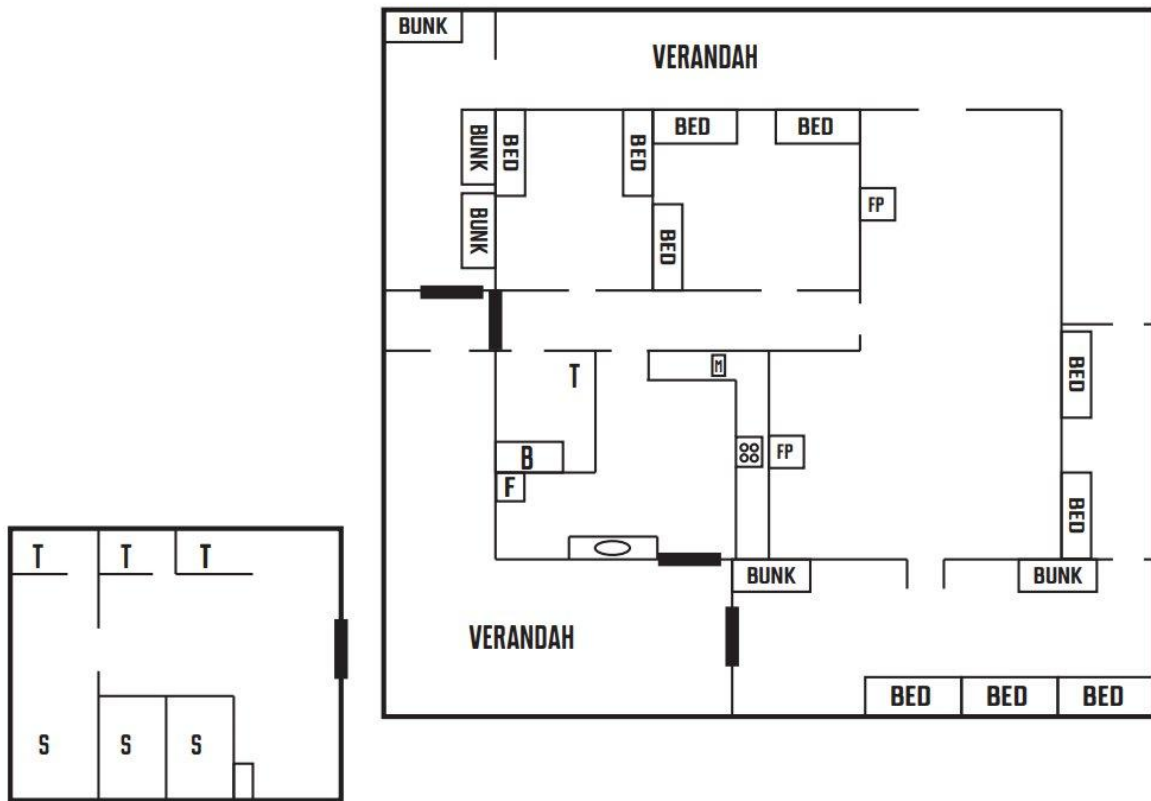
The living/dining area comprises four couches and a freestanding fireplace unit. Fold-out tables and stackable chairs are available.



Access to Broadhurst is via an unsealed pathway and a ramp. A disabled toilet and shower is located at the rear of the house.



Brownie Cottage – 20 pax.



Facilities:



Five bedrooms; two with two single beds, one with three single beds, one with three bunks (6 pax); and, one with two bunks and three single beds (7 pax)



The internal bathroom comprises a bath and toilet. The external washroom comprises three toilets, three showers and a trough.



Kitchen is equipped with four-burner gas stovetop and oven, microwave, urn and fridge/freezer.



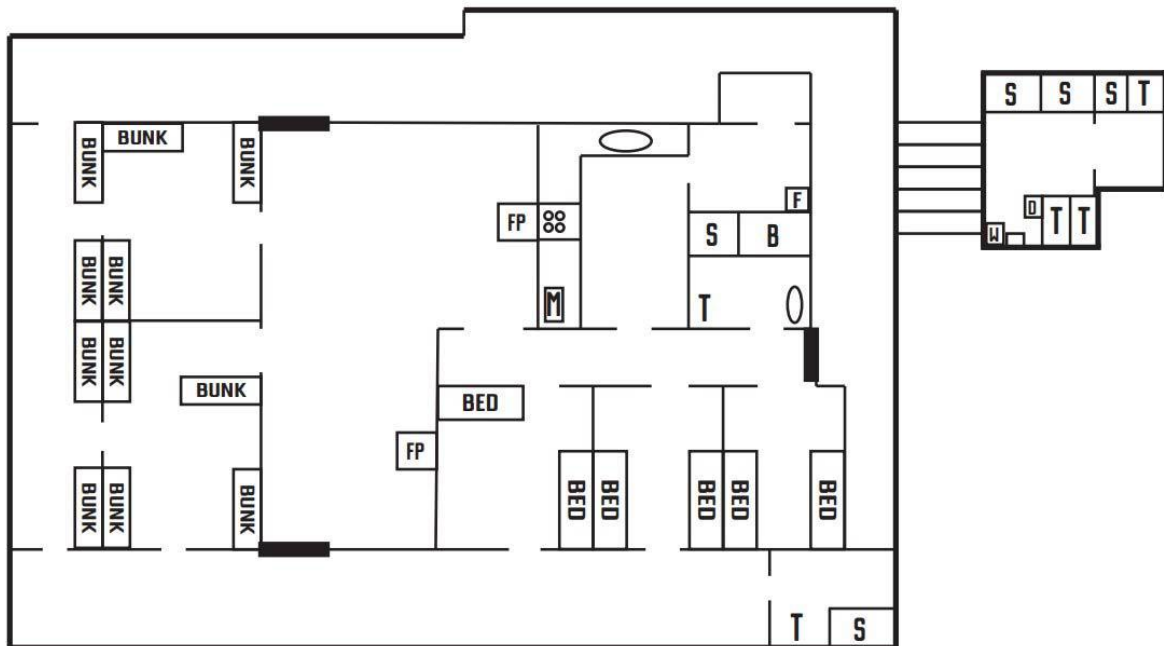
The living area comprises four armchairs and an open fireplace. The dining area has four tables, a number of stackable chairs and an open fireplace.



Access to Brownie Cottage is via an unsealed pathway and a concrete ramp. A separate toilet/shower is located at the rear of the washroom.



Guide House – 28 pax.



Facilities:



Six bedrooms; two with four bunks (8 pax each), one with three bunks (6 pax each) and three with two single beds.



Internally, there is a bathroom with toilet, shower and bath. Externally, there is a laundry block comprising a washer and dryer, trough, three toilets and three showers.



Kitchen is equipped with five-burner gas stovetop and oven, microwave, toaster, urn and fridge/freezer.



Dining room comprises a four dining tables and a number of stacking chairs. Living room comprises a number of armchairs and an open fireplace.

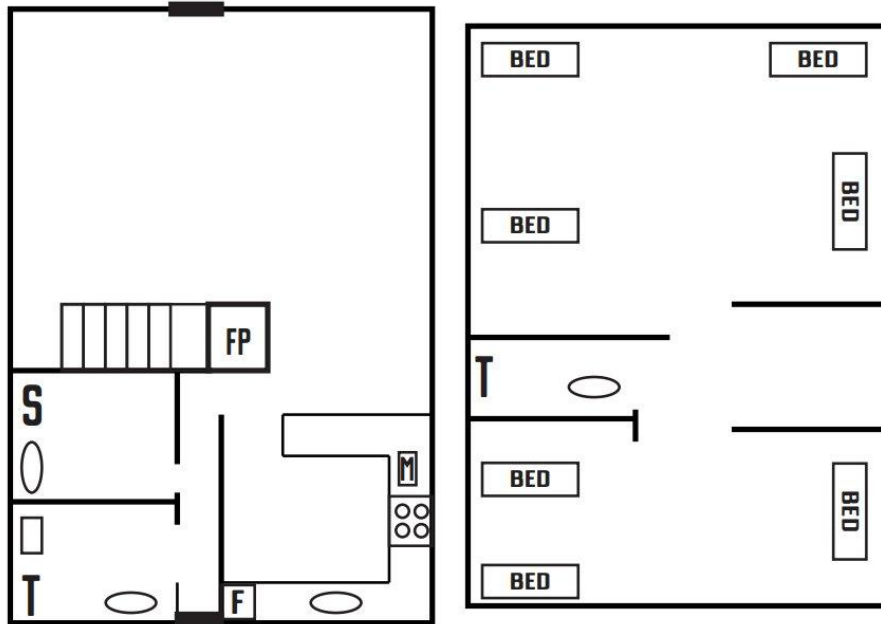


Access to Guide House is via an unsealed pathway. A disabled toilet and shower is located at the rear of the house.



Thank You Chalet – 7 pax.

Offered exclusively to adult Guide Members, this Chalet is ideal for Family stays or staff rotation.



Facilities:



Two bedrooms; one with four single beds and one with three single beds.



Kitchen is equipped with four-burner gas stovetop with oven and grill, microwave, toaster, kettle and fridge.



Access to the Chalet is via an unsealed pathway and bedroom admission is via a stairway. This accommodation is not recommended for those requiring wheelchair accessibility.



Downstairs there is a toilet and shower in separate rooms. Upstairs, a toilet is available.



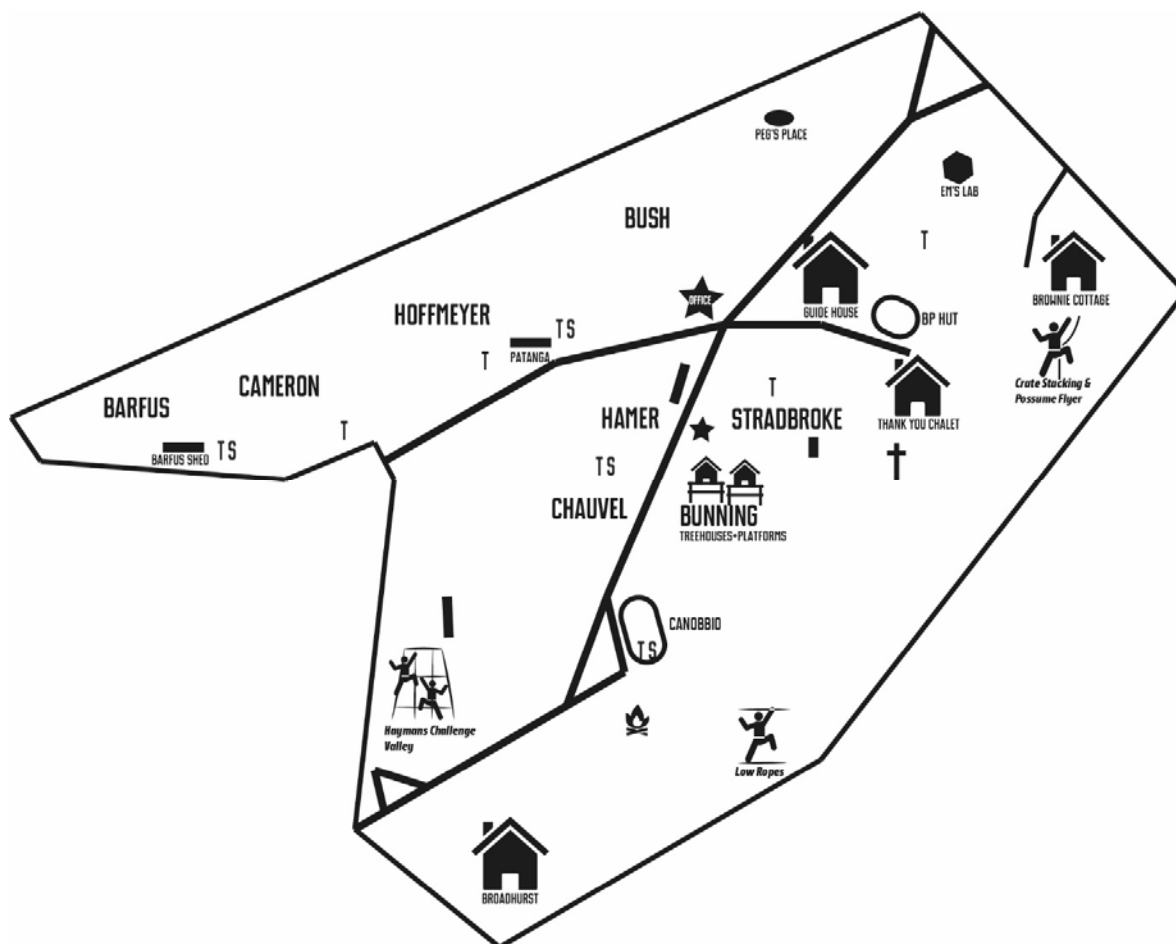
Dining room comprises a dining table and seven chairs. Living room comprises a sofa and two armchairs and a freestanding fireplace unit.



Outdoor Accommodation

Up to 500 outdoors.

Eight main campsites are available for groups to book – Hamer, Chauvel, Stradbroke, Bush, Hoffmeyer, Cameron, Barfus and Bunning. Bunning campsite comprises two treehouses and three platforms for alternative camping use. Each campsite has a corresponding shelter, toilet or ablution block. The campsites and amenities are mapped below.



Patanga has a fridge, microwave oven, showers & toilets and is located near Bush and Hoffmeyer campsites. **Barfus Shed** has a fridge and showers & toilets and is located near Cameron and Barfus campsites. Stradbroke has a toilet block and a small outdoor shelter.

Hamer and Chauvel campsites share an ablution block with showers and toilets. Chauvel campsite has a number of permanent 10-person dome tents set-up for Member use.

Camping Equipment

ACE 10 man dome tents, Cork tents, fire drums and fire buckets are available at all campsites for Guide use. Group Leaders are responsible for the distribution of equipment to campsites and the return of equipment to the appropriate areas in sheds. All equipment must be cleaned and dried well.

All campers need to provide their own bed linen or sleeping bag, pillows, table linen, towels, tea towels, dishwashing detergent and dishcloths. Blankets are available for indoor accommodation only.

Treehouses and Platforms

The Treehouses & Platforms are located on Bunning campsite (adjacent to Stradbroke) and are available at overnight outdoor camping rates. Members must ensure that users are of an appropriate fitness level to access and use these amenities.

Each Treehouse comprises two bunks, with the upper bunks recommended for storage only.

A maximum of eight (8) persons can sleep on each platform.



Treehouses

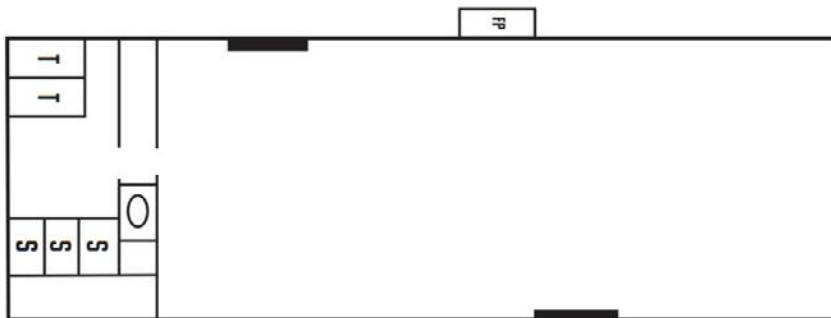


Platforms

Meeting & General Activity Areas

Canobbio Cabin

Canobbio Cabin is a large separate buildings suitable for activities, workshops, a dining room or an emergency sleep area for outdoor campers. Canobbio Cabin contains three showers, three toilets and a sink. The hall is air-conditioned and has an open fireplace suitable for campfires in inclement weather.



Canobbio Cabin external



Canobbio Cabin internal

BP Hut

BP Hut comprises a hall (with no amenities and a single sink) and is used for dining or emergency accommodation only.

BBQ's For Hire

Two barbeques are available for general hire. Please ensure BBQ's are cleaned thoroughly after use.

Chapel and Quiet Place

An outdoor Chapel set amongst the trees is available for use.

Campfire Circle

A designated outdoor campfire location for large groups located at the rear of Canobbio. Permission from the Caretaker must be sought for a campfire (as there may be fire restrictions). Campfires can only be lit in the designated area and must be completely doused and the Caretaker informed when finished.

Heritage Camping Museum

Located adjacent to the Treehouses, the Heritage Camping Museum displays an abundance of memorabilia from the "early camping days". Keys can be obtained from the Office.



Outdoor Chapel



Campfire Circle

Activities:

Please inform the booking office which activities you would like to book when requesting your accommodation.

Britannia Park Activities (no fee):

Hayman Challenge Valley

Low profile confidence course which includes a mud pit, tyre walk, cargo net and log wall. Located opposite Broadhurst Lodge and adjacent to Glendenning Hut which comprises a low-profile traverse wall. Adult supervision and spotters are required on all elements.

Orienteering

A number of Orienteering courses are available onsite at Britannia Park ranging from a "5 check-point" course to the maxi "30 check-point" course. All equipment is available from the Office.

Possum Prowl

A night-time prowl through the park to spot the local marsupials.

Giant Games

Giant games including giant "Jenga" and giant "Connect-4" and are available from the Office.

Ice-Blocking

Participants glide down a slope sitting on large ice-blocks.

Hike to the Falls

A 50-minute round trip on foot to the local Britannia Falls. Maps are available from the Office.

Britannia Park Activities (external fees apply):

Archery

Yarra Valley Archery Park can set-up an Archery activity onsite at Britannia Park. This must be booked separately by the user and is not organised through GGV. Please inform the booking staff if you have made an Archery reservation so that space can be set aside for your activity. Yarra Valley Archery Park is run by Ian Simmonds who can be contacted at 5967 3323.

Earth Education Camps

Ecological adventure camps designed for Guides in specific year levels. Educational activities take place in "Em's Lab" which relate to the natural world.

Britannia Park “Adventurous Activities” (fees apply)

Please inform the booking office which of these activities you would like to book when requesting your accommodation at Britannia Park.

Adventurous Activity bookings will be confirmed prior to your stay at Britannia Park subject to instructor availability. Please note that these activities are run by a dedicated set of trained volunteers and their availability cannot be guaranteed. Activities may be cancelled due to inclement weather.

An OUT.01 form must be submitted to the GGV Camping and Adventure Officer at least four weeks prior to your group’s participation.

Possum Flyer

An adventurous activity where each participants takes turns being the “Possum” by being harnessed to one end of a rope. The rope runs over a 14 metre-high pulley and is attached to the participant’s team. When the team runs, the “Possum” gets a giant swing into the air! Minimum of 8 participants who are taller than 100cms in height.

Crate Stacking

An adventurous activity run at the Possum Flyer location. Crate Stacking is a team building activity requiring a person, the “Stacker”, to stack milk crates on top of each other to build a large tower they can stand on! Their peers assist by passing the crates and belaying the Stacker. Minimum of 8 participants who are taller than 100cms in height and 10+ years in age.

Low Ropes Course

An adventurous activity where participants are guided over an initiative ropes course. Minimum of 8 participants.

Caving

An adventurous activity run at the local Britannia Creek Cave. Minimum age requirement of 9 years old. A maximum of 12 novices per trip (adult or child). Participants are responsible for their own travel between the campsite and the caves.

Other Local Attractions:

Lilydale to Warbuton Rail Trail

Yarra Junction is situated along the Lilydale-Warburton Rail Trail which allows you to walk or ride your bicycle or horse for 38 km along a clearly marked course following the route of the old railway line.

Mount Donna Buang Rainforest Gallery and Skywalk

The Rainforest Gallery and Skywalk features a 40 metre long observation platform which takes you into the rainforest canopy 15 metres above the ground. Located approximately 20 minutes away by car.

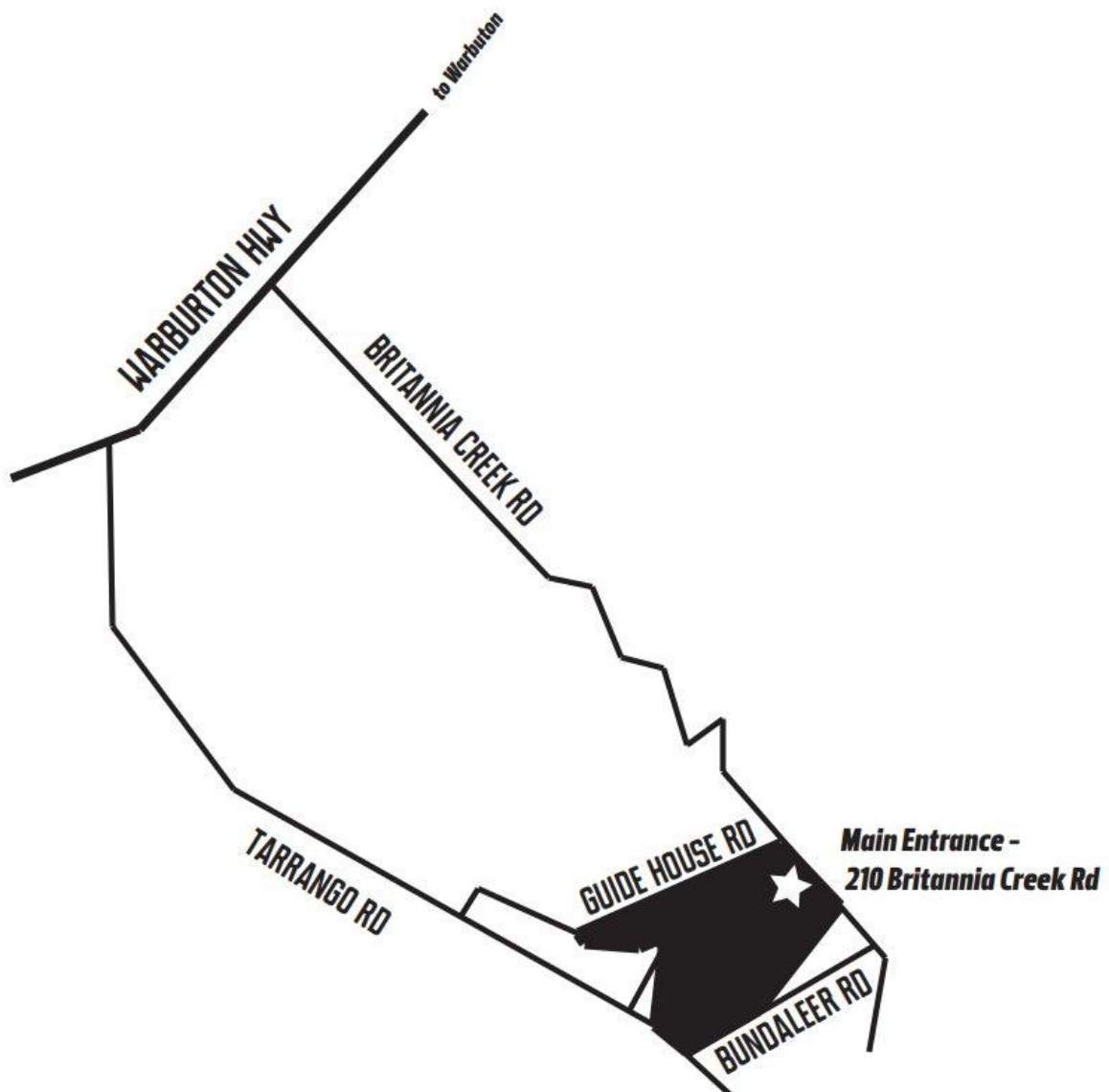
Healesville Sanctuary

Healesville Sanctuary is a zoo specialising in native Australian animals. Located approximately 25 minutes away by car.

Directions

210 Britannia Creek Rd, Wesburn 3799

Britannia Park is located 72km east of Melbourne.



Driving:

Drive through Yarra Junction Township on Warburton Highway and turn right onto Tarrango Road. After 2 kilometres turn left onto Guide House Road and follow to the end. Turn right onto Britannia Creek Rd, with the main stone entrance to the right.

Please note that some navigation systems will take you to Indigo Road to the rear of the property, where a gate inhibits access. Unless you require access and parking for Broadhurst Lodge, please follow Guide House Road around to the front of the site to the Main Entrance.

Buses are not allowed onto Britannia Creek Road past Bundaleer Road.

General Conditions of Hire

It is the responsibility of each group to ensure that campers understand and follow Britannia Park rules and procedures. Each group must have a competent leader in charge to liaise with the Caretaker. The group leader is responsible for camper supervision, safety and first aid at all times.

Britannia Park staff or their sub-contracted outdoor activity providers may instruct, lead, demonstrate or assist in an activity but the group leader is deemed to be responsible for overall group supervision.

ARRIVAL/DEPARTURE

On arrival, the LIC or Group Leader will collect keys from Office and provide a completed camper register and signed conditions of hire.

Campers should **not** enter the camp prior to the allocated time and should not overstay the allocated departure time.

The Caretaker will conduct a roll call and address the campers as soon as practicable after arrival. It is the responsibility of the group leader to assemble the campers at a mutually convenient time. If group dynamics do not permit this then it is the responsibility of the group leader to convey the safety briefing to the campers according to Caretaker directions.

BEHAVIOUR

Care and common sense should be taken in all buildings. Group leaders are asked to remind campers to respect each other, others personal property and the environment. **All noise/music needs stop by 11.00 pm (local by-laws)**. Food and drink should only be consumed in buildings or on verandahs (no food in bedrooms).

Please respect the privacy of other groups on site.

CATERING

Self-catering.

All kitchens meet current Shire Regulations. Food Safety Plans are the responsibility of the group

All appliances are "Test & Tag". Any appliances brought on site are required to be "Test & Tag" before used at Britannia Park Campsite by commercial caterers working **on site**

It is the responsibility of the Hirer to ensure the caterer has appropriate insurance certificate, food registration and food safety plans.

CLEANING BEFORE DEPARTURE

All groups are responsible for cleaning houses/campsites – as per cleaning Roster on Notice Boards. Arrange with Caretaker to inspect houses/campsites before your group departs.

DAILY DUTIES

Britannia Park is to be left in a clean and neat condition by the campers. All groups are responsible for cleaning and maintaining all areas in a hygienic manner during their stay.

DRINKING WATER

Drinking water is mains supply.

FIRST AID

First aid is the responsibility of campers. Campers must provide their own first aid equipment and trained staff.

NO SMOKING on the property (includes Indoors)

NO ANIMALS permitted – including NO DOGS on LEADS (they must stay in the car).

EMERGENCY PROCEDURES

The Britannia Park Emergency Management Plan is available on the GGV website.

Procedures - Emergency procedure notices are posted throughout Britannia Park and campers should make themselves familiar with the arrangements and Evacuation Points clearly signed around the site.

Fire Fighting Equipment - Extinguishers, fire hoses and smoke detectors are vital and are located around the site. These should not be tampered with or removed.

Fires - No fires or BBQ's may be lit on the property without the consent of the Caretaker.

FIRE DANGER RATING -Every day during the fire season the Bureau of Meteorology (BoM) forecasts an outlook of the fire danger index (FDI) by considering the predicted weather including: temperature, relative humidity, wind speed and dryness of vegetation. The Fire Danger Rating for each weather district is determined by the BoM in consultation with fire agencies. Each of the Fire Danger Ratings has recommended actions you should follow.

CODE RED (Catastrophic)- should your camp/event fall on a CODE RED day your booking will be cancelled, you will not be allowed on the property. If already onsite we evacuate the property.

EXTREME - should your camp/event fall on an EXTREME day your booking will be cancelled and you will not be allowed on the property. If already onsite we evacuate the property.

SEVERE – should your camp/event fall on a SEVERE day your booking will be reviewed. If already onsite be alert to possible FIRE HAZARD changes and the possible need to evacuate the Park.

GROUP LEADERS

It is the group leader's responsibility to ensure that:

Campers under 18 years of age have appropriate **parent/guardian consent** to attend the camp

Each camper has completed a **health/medical record sheet**

The campsite's **illness and injury register** is filled out for all such incidents

The Campsite is provided with a written **list of camper names**

Safety issues associated with self-led off-site excursions are identified and necessary precautions taken

Campers adhere to sun safety strategies

Bed-wetters, sleepwalkers & campers under 6 years of age should not sleep on top bunks

Britannia Park Caretaker and Activity Instructors are to be informed of any camper's/participant's medical conditions or behaviour that may arise and place the campers/participants/or others at risk.

WHAT TO BRING:

Sleeping bag or bed linen, pillow, towel, toiletries, insect repellent, personal needs and torch.

Group Leaders to bring tea towels, dish washing detergent, dish cloths, pot scourers, sharp knife, septic-friendly toilet paper, paper towels (not recycled) and bath mats, spare torch.

PROPERTY

Damage and loss - All breakages and losses to Britannia Park property or equipment are to be reported to Britannia Park Caretaker. They will be invoiced to the group. Britannia Park takes no responsibility for the loss or damage to personal property. Campers are only permitted to access the buildings to which they have been allocated.

Parking - All vehicle parking is strictly at the owner's risk and only in designated car parks. Patrons must reverse into car parking spaces.

Speed restrictions - Speed restriction signs are on display around the park and are strictly enforced (8km/h).

The environment - No camper is permitted to bring firearms, animals or pets onto the property or to disturb the natural environment. Garbage and recyclable materials are to be placed in rubbish bins provided.

Smoke free environment - All indoor & outdoor areas are smoke-free zones.

Alcohol— There is no requirement to seek permission of GGV to consume alcohol on premises, however, it is trusted that all groups adhere to the following guidelines

– **Girl Guides Australia Policy** –

Girl Guides Australia adhere to State licensing, liquor and drink driving laws and recognize it is illegal for people under 18 years of age to drink or serve alcohol.

Girl Guides Australia does not permit alcohol at Guide functions and activities where those attending are predominantly under 18 years of age.

Members have a duty of care not to consume alcohol while responsible for young people under 18 years of age while in charge of adventurous activities.

When alcohol is available at an adult's only Guide event, non-alcoholic drinks should also be provided.

We would ask that you are sensitive to needs of neighbours and other campers.

Be alert to noise levels and late-night "revelry" that may become a disturbance to others. Amplified music to cease by 11pm as required by the Shire.

Out of bounds areas – workshops, residences. Other areas including work sites. Specialized activities Ropes Courses, and Possum Flyer) are 'out of bounds' to non-participants.

Tent Camping – Tents are not permitted under trees. Campers will be asked to relocate their tent if deemed at risk.

ACTIVITIES

Britannia Park reserves the right to withdraw equipment or access to activities should the camper group not provide suitably trained, qualified or experienced activity leaders, or be found abusing equipment. When Britannia Park Caretaker(s), including sub-contracted activity providers, demonstrate, lead or instruct an activity they will take responsibility for the technical skills and related safety of the participants.

Group leaders are responsible for the supervision and behavior of campers at the activity, to and from the activity, for those campers awaiting their turn and also be responsible for any First Aid requirements.

No specialised activities are to be undertaken without the prior approval of the Caretaker.

TERMINATING THE OCCUPANCY

Britannia Park reserves the right to terminate the occupancy without notice for breach of the *General Conditions for Hire*. Britannia Park Caretaker(s) are empowered to take action as deemed necessary for the proper conduct of the camp.

AGREEMENT

By paying a deposit or confirming your booking, you have agreed to comply with the conditions outlined above.

ACKNOWLEDGEMENT	
I have read and understand the "General Conditions for Hire".	
Name:	Group/Organisation/School:
Position:	
Signature:	
Date:	
<i>This form is to be completed and lodged at the Office on arrival at Britannia Park.</i>	

Old Site Map

