



LONSDALE LODGE

Information Booklet

AN EXTRAORDINARY OFFER

In May 2018, Girl Guides Victoria was contacted by the Lonsdale Ski Club's Committee. The Committee wanted to know, *'Would Girl Guides Victoria like to take over ownership of the Lonsdale Ski Lodge, free of charge?'*

Our answer, of course, was 'Yes! We'd like that very much!'

We have kept the Lonsdale Ski Lodge's name and continue to celebrate its history. We're also excited to see Guiding stories unfold at the lodge.

FOR BOOKINGS CONTACT US:

 (03) 8606 3500

 lonsdale@guidesvic.org.au

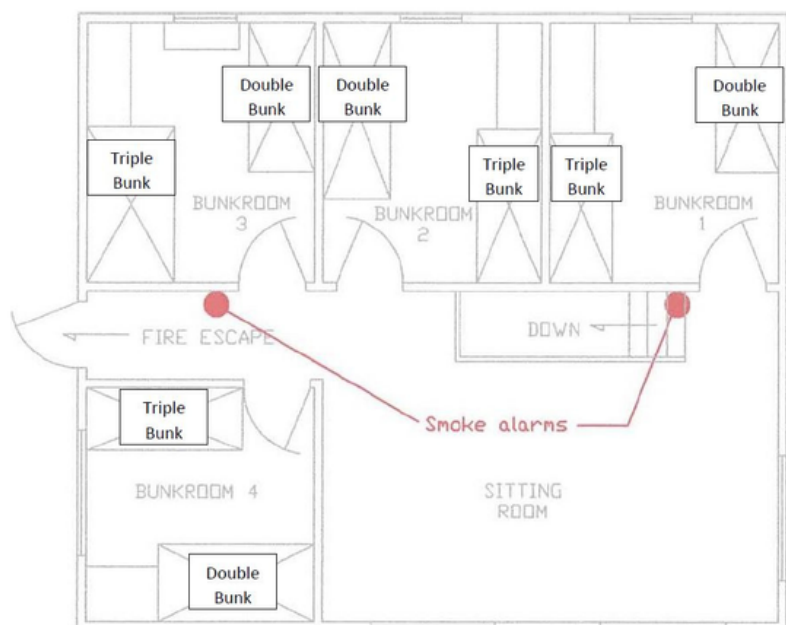


GIRL GUIDES
AUSTRALIA
VICTORIA

ACCOMODATION

The lodge consist of four bedrooms upstairs. Each room has a double bunk and a triple bunk. A total of 20 people can stay overnight in the lodge. Visitors are to provide their own bedding.

T



To meet Girl Guides Victoria's Child Safe Guidelines, a maximum of 15 youth members and 5 adults can be accommodated in the lodge.

FOR BOOKINGS CONTACT US:

 (03) 8606 3500

 lonsdale@guidesvic.org.au



GIRL GUIDES
AUSTRALIA
VICTORIA

INDOOR FACILITIES

The lodge contains a shared, self-contained kitchen and dining area for whenever required!

The lodge has two open living spaces with plenty of couches. The bathroom consists of three toilets, two hand basins and three showers each with their own hand basin. A large drying room is available for all your wet weather clothing.

Take a hot shower in the shared bathroom, and take advantage of the laundry facilities in the huge, expansive drying room.

The bathroom consists of three toilets, two hand basins and three showers each with their own hand basin. A large drying room is available for all your wet weather clothing.

FOR BOOKINGS CONTACT US:

 (03) 8606 3500

 lonsdale@guidesvic.org.au



GIRL GUIDES
AUSTRALIA
VICTORIA



The downstairs open plan space consists of couches, and dining space for 20 people. While there is no WIFI or TV reception at the Lodge, it is well equipped with a large TV and DVD player. A selection of DVD's are available for visitors. A small selection of books and boardgames can be found on the bookshelves.

INDOOR AMENITIES

- Single oven
- Two stove tops (8 burners)
- Dishwasher
- Fridge (no freezer)
- Microwave
- Kettle
- Two four slice toasters
- Plenty of crockery, cutlery, pots, pans and cooking utensils for your stay

FOR BOOKINGS CONTACT US:

 (03) 8606 3500

 lonsdale@guidesvic.org.au



GIRL GUIDES
AUSTRALIA
VICTORIA

ACTIVITIES

Activities available on the mountain include: snow sports such as skiing, snowboarding, and tobogganing; alpine dingo educational encounters; mountain biking; frisbee golf and more!

Green Season - October to June

Mt Baw Baw provides free and fee paying activities suitable for all ages.

Free

Walking Tracks

Frog Fact Walk: Learn about the critically-endangered Baw Baw frog
In-ground trampolines

18 hole Disc Golf: Frisbees, maps and scorecards available in the lodge

Fee - book directly with Mt Baw Baw Guest Services

Mountain Bike riding tours and bike hire Laser tag

Educational "Meet the Alpine Dingo's" sessions Orienteering

Girl Guide Unit camps

A selection of games and sporting equipment is available for Girl Guide units

- Giant Jenga
- Bocce Sets Parachute games Bean Bags
- Indoor hopscotch mats Giant dice games

Open all year round, the Lodge offers immediate access to the Mount Baw Baw ski runs and lifts!

FOR BOOKINGS CONTACT US:

 (03) 8606 3500

 lonsdale@guidesvic.org.au



GIRL GUIDES
AUSTRALIA
VICTORIA

ACTIVITIES

Green Season - October to June

Mt Baw Baw provides free and fee paying activities suitable for all ages.

Free

Walking Tracks: Please keep off cross country trails

Snow play

Frog Fact Walk: Learn about the critically endangered Baw Baw frog

18 hole Disc Golf; Frisbees, maps and scorecards available in the lodge

Fee - book directly with Mt Baw Baw Guest Services

Mountain Bike riding tours and bike hire

Laser tag

Educational "Meet the Alpine Dingo's" sessions

Orienteering

White Season - June to September

Mt Baw Baw has plenty of winter sport activities and other activities to keep you entertained.

Free

Walking Tracks: Please keep off cross country trails

Snow play

Frog Fact Walk: Learn about the critically endangered Baw Baw frog

Girl Guide unit camps

A selection of games & sporting equipment is available for Girl Guide units

- Giant Jenga
- Bocce Sets
- Parachute games
- Bean Bags
- Indoor hopscotch mats
- Giant dice games

Fee - book directly with Mt Baw Baw Guest Services

- Ski and snowboarding
- Cross-country skiing
- Snow shoeing
- Tobogganing
- Japanese snow fighting
- Educational "Meet the Alpine Dingo's" sessions

FOR BOOKINGS CONTACT US:

 (03) 8606 3500

 lonsdale@guidesvic.org.au



GIRL GUIDES
AUSTRALIA
VICTORIA

The Mountain

The below Map is supplied by Mount Baw Baw Alpine Resort.

Option 1 is the normal bitumen road but it is VERY windy.

Option 2, although gravel for a 30km section, is much nicer on those who get travel sickness. , the road is straighter and wider. Most staff on the resort take this option as it takes roughly the same time to get to Warragul as Option 1 with a much easier drive.



FOR BOOKINGS CONTACT US:

(03) 8606 3500

lonsdale@guidesvic.org.au



GIRL GUIDES
AUSTRALIA
VICTORIA

NO FUEL on the Mountain

We suggest you fill up with fuel in the last major town (depending on your travel route, we recommend: Launching Place, Warragul, Neerim Junction or Moe) as there are no fuel outlets at, or closer to Mount Baw Baw.

White Season Resort Entry Fee

This fee is applicable to all motor vehicles and passengers of coaches and taxis entering all Victorian Ski Resorts during the declared snow season.

For more information and prices, please the resort website:

<https://mountbawbaw.com.au/resort-entry>

Snow Chains

ALL Vehicles including 4x4's must carry chains when travelling to Mt Baw Baw during the declared snow season. We recommend hiring chains from Baw Baw Sports at Neerim South, Icy Creek Chain Hire or Erica Ski Hire.

Car Parking

When arriving at the resort you can park, initially, in the Day Carpark at the Village Entry. This is subject to parking availability. Once you have unloaded your car, you will need to move your car to Car Park 2 or 3 for overnight parking. In the green season cars may remain in the Day Carpark for the duration of your stay. There is no parking allowed at the lodge.

Diesel Cars

Ice breaker (put into all diesel vehicles BEFORE you get here) , this is available at Repco, Autobarn, Supercheap Auto, etc.

Once temperatures drop below the freezing point for diesel it can start to solidify into a thick waxy substance that cannot pass through filters and can stop your car from working. Alpine Diesel Mix is usually available closer to the region so ensure you have enough in your tank to allow for the journey to fill up with the mix. Alpine Diesel is available from Saviges Road Fast & Ezy in Moe.

FOR BOOKINGS CONTACT US:

 (03) 8606 3500

 lonsdale@guidesvic.org.au



GIRL GUIDES
AUSTRALIA
VICTORIA

The Mountain

NO Supermarket

Please bring all your food needed for the duration of your stay as there is no supermarket facilities on the mountain. Village Central Restaurant is open for lunch and dinner. Pre-booking is highly recommended. During the white season, the Skiosk is open for hot take-away on weekends.

Ski Hire and Rentals

There are multiple ski hire options on the mountain. Please visit the Mt Baw Baw website rentals page for more information. The lodge has a few snow jackets available for Girl Guide members in an emergency.

White Season First Aid Centre

The Mt Baw Baw First Aid Centre (formerly Med Centre) is operated by Ski Patrol, and hosts a doctor from time to time. Contact Mt Baw Baw Ski Patrol or speak to one of our staff if you require medical assistance.

The medical centre is not staffed full time.

Closest hospital is Latrobe Regional Hospital in Traralgon. There's an after hours GP clinic at Latrobe Community Health Service in Moe called Moe After Hours (MAHMS)

FOR BOOKINGS CONTACT US:

 (03) 8606 3500

 lonsdale@guidesvic.org.au

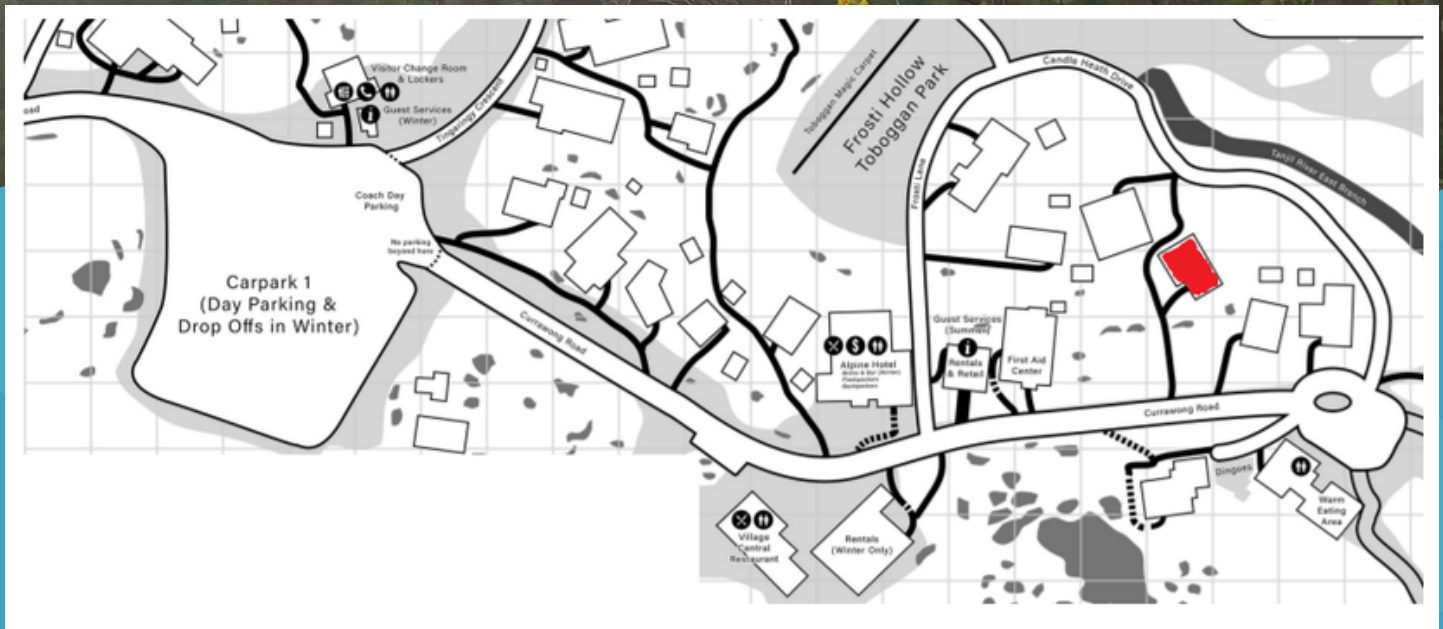


GIRL GUIDES
AUSTRALIA
VICTORIA

Finding the Lodge on the mountain

If you have a back-pack or a bag with sturdy wheels, it is a very convenient way to carry your luggage. The Village is relatively compact and it is a relatively short walk (150m) from carpark 1 at the Lodge. The Lodge is located opposite the Alpine Dingo enclosure.

During the white season an over-snow baggage delivery service operates within the Village. Additional fees apply. For enquiries and bookings contact the Mt Baw Baw Alpine Guest Services.



Lonsdale Lodge marked in RED

FOR BOOKINGS CONTACT US:

 (03) 8606 3500

 lonsdale@guidesvic.org.au



GIRL GUIDES
AUSTRALIA
VICTORIA

Accommodation Prices

Please refer to the Lonsdale Lodge price list found on the Girl Guides Victoria website.

In winter there is a two night minimum stay on weekends (Friday and Saturday nights must be booked together), Sunday through to and including Thursday, is a one night minimum stay.

Mt Baw Baw Guest Services

Phone: 03 5165 1136

Email : guest.services@mtbawbaw.com.au

Website: mountbawbaw.com.au

Bus Companies

Mt Baw Baw is a declared hazardous area. All vehicles over 12 seats MUST have an alpine area qualified driver. A list of suitable bus companies can be found on the Mt Baw Baw website.

To request a stay at the Lodge,
please send an email to lonsdale@guidesvic.org.au!

FOR BOOKINGS CONTACT US:

 (03) 8606 3500

 lonsdale@guidesvic.org.au



GIRL GUIDES
AUSTRALIA
VICTORIA