



welcome to

# **SNOOZERELLA**

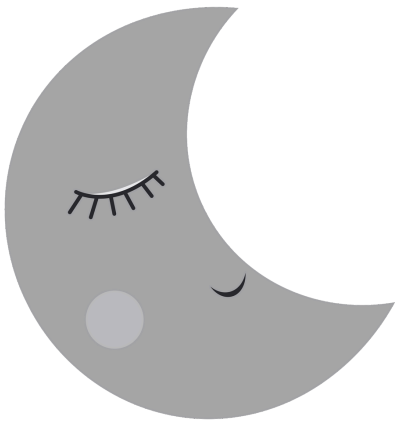
**2025**

**Twisted Science®**

**MOORABBIN**



**GIRL GUIDES**  
**AUSTRALIA**  
**VICTORIA**



# TABLE OF CONTENTS

- pg 1 |** Snoozerella Basics
- pg 2 |** What is TwistED Science®?
- pg 3 |** What might my Guide get up to at TwistED Science®?  
What can my child expect at Snoozerella?
- pg 4 |** Sign-in & Sign-out procedures  
Added Bonus!
- pg 5 |** Important information from TwistED Science®
- pg 6 |** Getting to Snoozerella  
Conditions of Attendance
- pg 7 |** Snoozerella Rules  
Weather & Cancellation Policy  
Supervision & Security
- pg 8 |** Health, First Aid, Quiet Spaces & Social Story
- pg 9 |** Mobile Phones & Devices
- pg 10 |** Kit List (what to bring)
- pg 11 |** Registration Guide
- pg 12 |** Balance Payment Instructions



# SNOOZERELLA

Moorabbin

# 2025

**PARENTS/GUARDIANS, GUIDES & VOLUNTEERS,  
PLEASE CAREFULLY READ THE CONTENTS OF THIS BOOKLET BEFORE REGISTERING**

## What is Snoozerella??

A sleepover for Girl Guides at TwistED Science®, Moorabbin! With interactive exhibits with friendly materials, colour, design & space. The emphasis is on having the best time!

## Who

Girl Guides Victoria Youth aged 5 – 9yrs (at the time of the event)

*Youth places are capped, due to venue capacity. A waitlist will be available if the event is sold out! Register today!*

+

Girl Guides Victoria Adult Volunteers

*Adult places are also capped.*

## When

Saturday 31 May (4:30pm) – Sunday 1 June (8:45am)

## Where

TwistED Science® Moorabbin

22-36 Bulli Street, Moorabbin

## Cost

\$130 for GGV Youth \*\*

\$35 for GGV Adult Volunteers

*Cost Includes: TwistED Science® entry, all activities, accommodation, dinner, supper, breakfast & some surprise goodies!!*

**\*\* A 50% deposit/balance option is also available upon registration - on offer until Wednesday 30 April @ 11:59pm.**

### **DEPOSITS ARE NON-REFUNDABLE**

***The Balance payment will be required 2 weeks prior to the event, Friday 16 May.***

***Please see the final page in this booklet for instructions on how to complete your balance payment.***

***You will also be sent a reminder 1 week prior to the final balance being due.***

**Youth registrations MUST CLOSE at 11.59 pm on 12 May**

Register ASAP to avoid disappointment!

For event specific queries, please contact the Snoozerella Committee at [snoozerella@guidesvic.org.au](mailto:snoozerella@guidesvic.org.au)

For registration assistance, after reading the registration guide (last pages), please contact [events@guidesvic.org.au](mailto:events@guidesvic.org.au)



# twisted<sup>®</sup>ED

## What is science



“Here at TwistED Science<sup>®</sup> we thrive on curiosity, how things come to be, how they work, move & feel! Through interaction with our exhibits you can explore all the fun of science through play. Our exhibits invite interaction with friendly materials, colour, design & space. The emphasis is on fun! They ensure every person of every age, ability & culture can be included. We love science & our passion has brought you the best of all we know in one space for you to explore & share. This is a place for query, wonder, action & contemplation. We are very proud of what we have built for you. Come & visit, we would love to show you around!”

Learn more about TwistED Science<sup>®</sup> here <https://www.twistedscience.com.au/>





## What might my science Guide get up to at

- Exclusive access to the venue for the duration of the event, with free time exploring the exhibit floor with hands-on, interactive science exhibits.
- A fully immersive, 360 degree movie in the mini planetarium – the TwistED Science® ‘Astrodome’.
- A chance to get up close & personal with a ‘Meet the Animals’ experience.
- A ‘Coding for Girls’ workshop.

and to wind down the evening, alongside supper, perhaps a fun Science Trivia quiz!

\*\*\*\*\*

### **What can my child expect at Snoozerella?**

Snoozerella is a State shared sleepover experience for our 5-9yrs olds.

It is a terrific opportunity for our younger Guides to meet Guides from other Units across Victoria, develop social skills, be supported in learning age appropriate independence, trying new things, & of course having a TwistED-ly fun time!

Once Guides have signed in, they will be given a warm welcome & orientation of the venue, so they know where meals will be had, the location of bathrooms & where they can find the different offerings for the evening.

The ‘Exhibit Floor’, ‘Astrodome’ & ‘Meet the Animals’ fun will kick off first. Guides will have the option of moving between the different areas, so they’ll get to experience whatever they choose.

Dinner will run in two time slots, with two groups in each slot, alternating with a ‘Coding for Girls’ Workshop session!

Guides will start settling down for the night in the upstairs area, setting up their sleeping bags, supported by each other & Leaders as required.

A light supper will also be on offer & maybe a fun science trivia!

Before going home, Guides will pack up their belongings, enjoy Breakfast & get ready to say goodbye to another year of Snoozerella fun! Don’t forget your goodies as well!

**\*\* Please note that the above is a draft structure (as at 17 April 2025) & activities & exhibits on the night are subject to operational availability & TwistED Science® reserve the right to change their offerings at any time.**

**Added Bonus!**

We're excited to let you know that for Snoozerella registered Guides, TwistED Science® are offering one FREE child entry for a future visit!

*(12 month validity - expiring June 1, 2026)*

You won't need to do anything to take up this offer, & finer details about offer redemption & any Terms & Conditions will be made available closer to the event.

There will also be some other goodies... but we'll keep that a surprise!

**Arrival | Sign-in \*\***

Arrival & Sign-In is between **4:30 - 5:00pm**.

- Please allow adequate time for travel, parking & the sign-in process. There will be approximately 120 Youth in attendance, so please support us in this process by arriving on time.
- There will be Snoozerella/Girl Guides Victoria signage to welcome you.
- A one-way traffic system will operate for drop-off and pick-up. Please see page 6 for further details and assist us in an efficient process.

Guardians are required to sign in their child before departing.

They must:

- Submit their Health Form

*Health forms are available in the Member Portal. These **will not** emailed out as in previous years.*

**NO HEALTH FORM = NO ENTRY**

- Submit any medications &/or health management plans (if applicable).

We ask that due to the large volume of Guides in attendance, Guardians say their goodbyes once Guides have signed in & entered the venue. There will be plenty of Leaders to help settle in the Guides & get them stuck into a great evening!

Guardians will not be able to access TwistED Science® throughout the duration of the event.

**Sign-out \*\***

Sign out is at **8:45am**.

- All Guides will be required to be signed out by their Guardian at the entrance/exit.
- Medications will be returned to Guides upon sign out.
- After this time, all Guides will be in the sole care of their Guardian.

**\*\* For safety & security reasons, late entries or early departures cannot be accommodated.**

# Important information from Twisted Science®...



## no instructions policy

We are a little bit different to most science centres:

- All exhibits invite interaction & can be enjoyed without the barrier of age, ability or culture.
- Instructions are only included as a last resort & all exhibits are about doing & having fun!
- We encourage you to touch, explore, get hands-on & have a go at everything.
- This is a place where both kids & adults can play, learn & make memories together.

Our mission is to create a fun learning environment where children & families can be curious, create & connect with the world around them.

## keeping you safe

Your safety is our first priority. We are extremely conscious of keeping everyone safe at Twisted Science® during your visit.

- We have 2 full-size roller doors opening to outdoors, fully fenced for child security but allowing a flow of fresh air into our exhibit areas.
- Air purifiers are on site in smaller rooms & child friendly sanitiser stations can be found throughout the centre.
- We thoroughly clean after each session.



## gift shop & snack lab cafe

- The gift shop & cafe will **not** be open whilst Girl Guides have exclusive use of the venue.
- Twisted Science® re-opens to the public on the Sunday at 9am. Should you wish to peruse the gift shop, stick around after Snoozerella.

To learn more about the venue, please view their website  
<https://www.twistedscience.com.au/>

**Driving**

Drop-off and pick-up will operate in a one-way system to ensure traffic flows as smoothly as possible. Please follow the guidance of our GGV Parking Marshalls.

For drop off, we recommend accessing TwistED Science® from Chesterfield Road, travelling west along Genoa St, and then left/south onto Bulli Street.

After drop-off, please continue either south down Bulli Street or directly across to Isabella Street.

**Public Transport**

Bus stop on the 822 Route (Isabella Street/Rowans Road) is a 4 minute walk.

Highett Train Station is the closest to the venue, a 2km trip.

*\*If you are coming from a regional area, your District or Region may be utilising a small bus, or be organising travelling on Public Transport as a group. Please connect with your relevant Leaders for more information.*

**Look out for the "Science Museum" road signs upon approach to TwistED Science®!**

# CONDITIONS OF ATTENDANCE

All attendees must:

- Be current Youth Registrants of Girl Guides Victoria
- Must be registered for the event, with full event fees paid.
- All participants must be at the event between arrival and departure times.

For safety and security reasons, GGV & TwistED Science® **cannot** accommodate late entries or early departures.

- All participants must adhere to the Girl Guide Laws, event rules and TwistED Science® Terms and Conditions.

All Youth event attendees must:

- Submit a health form & any required medication upon arrival.
  - All personal medication must be handed in upon arrival to the First Aider, and itemised on the Health Form. Medications should be in its original packaging, in a snap-lock bag, and labelled with the Guide's name and dosage instructions.
  - As siblings may not be together for all activities, medications cannot be shared, and each Guide must bring their own.
  - You must also bring a current management plan for any medical, mental health, or well-being concerns listed on the Health Form.
  - If possible, regular medications should be administered before and/or after arriving at Snoozerella (i.e., before 4:30pm and after 9:00am).
- **REMINDER** - Leaders cannot provide any medication to Guides, including over-the-counter pain killers. If medications are not provided and your Guide is uncomfortable, unhappy, or at risk, families may be asked to bring the required medications to camp or to take their Guide home.

**No Health Form = No Entry**

All Adult event attendees must:

- Attend Snoozerella with the understanding that they are attending the event to facilitate the safety & enjoyment of the Youth Registrants in attendance.
- Adhere to the adult Code of Conduct, all GGV CSCF Training, and be up to date with their WWCC & PC.

- Always treat others as you would like to be treated.
- Follow any instructions given to you by TwistED Science® Staff & the Girl Guides Victoria Snoozerella team.
- Be supportive of others who may be challenging themselves to try something new & feeling a bit scared.

Snoozerella is an event that ANY Victorian Guide aged 5 - 9 can attend, even if nobody else from their Unit is going! Adult places are limited, so your regular Guide Leader may not be able to join you, but there will be lots of other friendly Leaders who will be attending!

## **EXTREME WEATHER EVENT & CANCELLATION POLICY**

As the venue/event is indoors, and climate controlled, the event will be able to go ahead regardless of outdoor weather conditions, pending availability and reliability of essential services to the venue.

Please review the GGV Event Cancellation Policy

As at 4 December 2024

- If the event has no cost, please cancel your registration via email to [events@guidesvic.org.au](mailto:events@guidesvic.org.au).
- If the event is cancelled by Girl Guides Victoria, and has a cost, a full refund will be given.
- For events with a deposit/balance option, the deposit is non-refundable.
- If you withdraw from the event at least one month prior to the closing date for registrations, a 90% refund will be given.
- If you withdraw from the event less than one month before the closing date for registrations, a 50% refund will be given.
- For events with optional add-ons, such as buses/transport, accommodation, merchandise, meals etc, specific Cancellation Policies will be stipulated for each relevant event.
- If you withdraw from the event after the closing date for registrations, no refund will be given.
- You may apply for special consideration in exceptional circumstances. Such requests should be addressed to [events@guidesvic.org.au](mailto:events@guidesvic.org.au).

## **SUPERVISION & SECURITY**

Girl Guides attending Snoozerella will be supervised by Girl Guide Leaders who hold current Police & Working with Children Checks & have completed Child Safe training. In addition to Girl Guides Victoria volunteers, staff members of TwistED Science® will be in attendance throughout the event.

# HEALTH | FIRST AID | ACCESSIBILITY

There will be a fully qualified First Aider on duty at all times in a dedicated First Aid space.

Girl Guides Victoria will make every possible effort to accommodate a Guide's physical, developmental, and mental health needs. To adequately plan adult:youth ratios and support additional needs, Girl Guides Victoria relies on health information on a Guide's profile to be up to date. Please review this information on registration. The First Aid team will contact parents/guardians to discuss any additional needs, if required.

Any necessary adjustments need to be disclosed and discussed with the event team prior to the event. We have a duty of care to all youth and adult registrants, which means that if a Guide arrives with a support requirement the team is not prepared for, the Guide may not be able to remain at the event.

We understand that some Guides wanting to attend Snoozerella will be best supported by a dedicated carer. This could be a family member, a paid support worker, or even their Guide Leader. As Snoozerella is a female-only event, the carer must identify as female. If a Carer needs to attend Snoozerella, please reach out to [snoozerella@guidesvic.org.au](mailto:snoozerella@guidesvic.org.au) to discuss.

Further details about accessibility and inclusivity at TwistED Science® are on their website [here](#). If you have any questions or require wheelchair access or other support, contact [snoozerella@guidesvic.org.au](mailto:snoozerella@guidesvic.org.au) as soon as possible.

## Quiet Spaces

A quieter section of the exhibit floor will be available should Guides need a bit of quiet time, but still want an interactive space.

Another sensory quiet space room is available throughout the evening.

<https://www.twistedscience.com.au/about-us/accessibility/melbourne/sensory-room/>

## Social Story & Sensory Maps

View the TwistED Science® Moorabbin Social Story and Sensory Maps [here!](#)



*During registration, Guardians will be able to let the organising team know of any extra supports required for the event.*

# ELECTRONIC DEVICES & MOBILE PHONES

Girl Guide events are great opportunities to spend time with friends, get to know others, & enjoy all the amazing experiences on offer. We strongly encourage Guides & their Guardians to think about whether devices are needed for this event, & acknowledge that Girl Guides Victoria **cannot take responsibility for their safekeeping.**

If Girl Guides do take electronic devices, we recommend the following:

- When participating in activities, phones are put away.
- Permission is always sought before photos are taken of others.
- All social media posts are made with respect to our Girl Guide Promise to “respect myself & others”.

Event photographers will be posting to #guidesvic & #snoozerella. With the above guidelines in mind, Guides can also share photos so that we can follow all the fun!

**Girl Guides Victoria cannot monitor & are not liable for any photos youth members take or share.**

If you have any questions regarding this, or if there are specific legal issues regarding custody or safety with respect to photos, contact [communications@guidesvic.org.au](mailto:communications@guidesvic.org.au)

Emergency contact details will be provided in the final email out to families along with the Health Form.

If your Guide carries a mobile phone, please refrain from contacting them during the event as this can cause homesickness for your child & other children.

# WHAT TO BRING (KIT LIST)

Please pack light, & make sure everything is clearly named!

**Please wear your Girl Guide shirt to the event and closed toed shoes.**

**In a bag that Guides can manage themselves:**

- Health form + any required medications –
  - **no health form, no entry** (*found on your child's profile under 'View Event Registrations'*)
- Warm jumper
- Warm pyjamas
- Change of clothes including knickers & socks
- Face washer
- Personal kit (lip balm, tissues, & sanitary items or pull ups as required)
- Torch & spare batteries
- Dilly Bag (plastic bowl, plate, mug and cutlery)
- Drink bottle full of water
- BEDDING
  - Sleeping bag , pillow & blanket
  - Sleeping mat (eg Yoga mats or self inflating mat)
    - NO LILOS OR MATS THAT REQUIRE BLOWING UP
    - NO LARGE FOAM MATTRESSES
    - NO STRETCHERS

 we don't have much sleeping space and these items are too bulky

## MAKE SURE EVERYTHING IS CLEARLY NAMED...

This makes returning lost property at the event, and post-event, so much easier!

# REGISTRATION GUIDE

For event specific queries, please contact the LIC at [snoozerella@guidesvic.org.au](mailto:snoozerella@guidesvic.org.au)  
If you require further registration assistance, please contact [events@guidesvic.org.au](mailto:events@guidesvic.org.au)

If you're newer to Guides or are needing a hand with the new Member Portal and registration, please follow the instructions below.


These are also summarised on the registration page.

## HOW TO REGISTER |

1) Log in, and select the first child you wish to register. With the new Portal\*, if you have multiple children, you can register them for the same event, at the same time, in one transaction\*\*.

2) Locate 'Snoozerella 2025 - Twisted Science® - Moorabbin' under the Events section.

**PLEASE BE SURE TO REGISTER FOR THE CORRECT LOCATION**

3) Click on either the yellow  button or a blue  button, depending on your single or multi child Youth or Adult status.

4) For Youth, you will be presented with 2 registration options:

Youth - Full Payment

Youth - Deposit

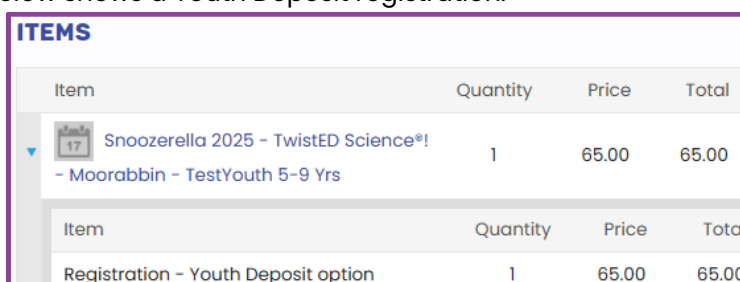
\*\*\*see next page for Balance payment instructions


5) You will be presented with a series of additional questions. Please complete and 

6) To complete registration, scroll back up and click the yellow button, , or to register an additional\*\* child, select  and complete registration for them.

7) Proceed to the check out cart, where you can review your selected options.

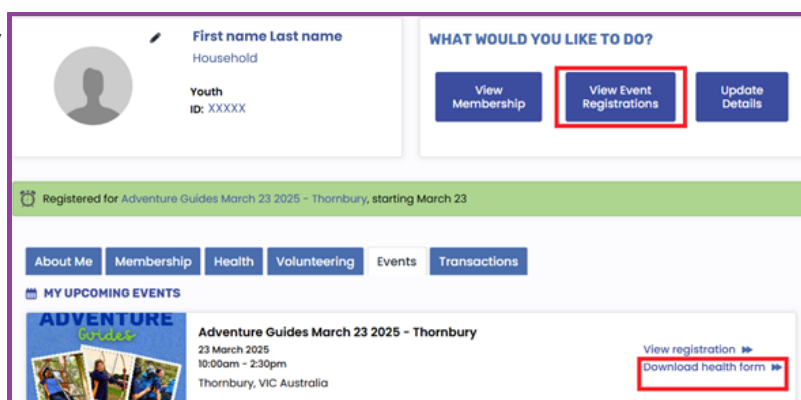
Eg) The example registration below shows a Youth Deposit registration.



| Item                                                                                                                                                        | Quantity | Price | Total |
|-------------------------------------------------------------------------------------------------------------------------------------------------------------|----------|-------|-------|
|  Snoozerella 2025 - Twisted Science®!<br>- Moorabbin - TestYouth 5-9 Yrs | 1        | 65.00 | 65.00 |
| Registration - Youth Deposit option                                                                                                                         | 1        | 65.00 | 65.00 |

Please review the cost, and complete payment. You will shortly receive an automated event registration confirmation email. Please check your junk mail.

8) To review any event registrations at any time, please select the **View Event Registrations** button. Here you will also be able to see upcoming and historical registration, and view, download and print the Snoozerella Health Form.



First name Last name  
Household  
Youth  
id: XXXXX

WHAT WOULD YOU LIKE TO DO?  
[View Membership](#) [View Event Registrations](#) [Update Details](#)

Registered for Adventure Guides March 23 2025 - Thornbury, starting March 23

About Me Membership Health Volunteering Events Transactions

MY UPCOMING EVENTS  
ADVENTURE GUIDES  
Adventure Guides March 23 2025 - Thornbury  
23 March 2025  
10:00am - 2:30pm  
Thornbury, VIC Australia

View registration [View registration](#)  
Download health form [Download health form](#)

\*If you have not yet logged in to the new 2025 Portal, and set up your new password, please view the March 3 email, or email [events@guidesvic.org.au](mailto:events@guidesvic.org.au) for this email to be resent to you.

## PAID A DEPOSIT? LET'S PAY THE BALANCE!

Great to hear you took advantage of our Deposit & Balance Payment option. Please follow the below instructions to pay your Balance.

### Balance Payment Due Date

Snoozerella Balance Due Date (Youth only) - **Friday 16 May**

The Balance can be paid at any time\*, by following the below instructions.

*\*(approx. 24hrs (Mon-Fri) after your initial deposit payment)*

To settle the outstanding balance, return to the registered individual's profile and select the **Transactions** tab.

First name Last name  
Household Account name  
Youth  
ID: XXXXX

WHAT WOULD YOU LIKE TO DO?

About Me Membership Health Volunteering Events **Transactions**

**OPEN INVOICES**

| Pay                                 | Invoice | Date                    | Description                                                              | Due Date      | Amount | Balance Due |
|-------------------------------------|---------|-------------------------|--------------------------------------------------------------------------|---------------|--------|-------------|
| <input type="checkbox"/>            | xxxxx   | 31/03/2025              | CHILD NAME Victorian Jamboree Contingent Fees + Jamboree Contingent Camp |               | 465.00 | 465.00      |
|                                     |         | <b>Item</b>             |                                                                          | <b>Amount</b> |        |             |
|                                     |         | Contingent Fee Balance  |                                                                          |               |        | 465.00      |
| <input checked="" type="checkbox"/> | xxxxx   | 31/03/2025              | CHILD NAME Victorian Jamboree Contingent Fees + Jamboree Contingent Camp |               | 75.00  | 75.00       |
|                                     |         | <b>Item</b>             |                                                                          | <b>Amount</b> |        |             |
|                                     |         | Contingent Camp Balance |                                                                          |               |        | 75.00       |
| <b>Total balance due</b>            |         |                         |                                                                          |               |        | 540.00      |
| <b>Total selected</b>               |         |                         |                                                                          |               |        | 75.00       |

**Add To Cart**

Select the **Open Invoices** drop down.

↙ The balance is due at the above stipulated date, however can be paid at any time prior, once visible in the **Transactions** tab.

The Amount is the total of **\$130**, and the Balance will display as **\$65**.

Click the check box for the item you wish to pay, and **Add To Cart** to complete the payment.

*The example displayed here is for another event, but the same instructions apply.*

**FULL BALANCE PAYMENT IS  
DUE NO LATER THAN FRIDAY 16 MAY**