



BRITANNIA PARK CAMPSITE

GENERAL INFORMATION

Contact Information



0447 797 021



britparkcampsite@guidesvic.org.au



www.guidesvic.org.au



TABLE OF CONTENTS

3 About Britannia Park

5 General Information

7 Indoor Accommodation

11 Outdoor Accommodation

13 Meeting and General Activity Areas

15 Activities

17 General Conditions of Hire



ABOUT

Discover Britannia Park, a 44-acre Yarra Valley destination offering lodges, outdoor activities, and beautiful nature for groups and events.

Britannia Park has been owned and operated by Girl Guides Victoria since 1938. The park spans 44 acres of bush setting in the Yarra Valley, featuring 4 lodges, an activity tower with flying fox, abseiling and rock-climbing wall, and crate stacking/possum flyer available for all users. The property is well-maintained, featuring ample open spaces and local wildlife.

The site can accommodate 85 people indoors and up to 500 outdoors. There are five grassed campsites available, ranging from one acre to five acres, all equipped with outdoor toilets and shower facilities. Campsites require a minimum booking of 20 people for public use.

Britannia Park is within walking distance of the state forest, which includes Britannia Creek, Britannia Falls, and Britannia Creek Caves. The Lilydale to Warburton Rail Trail is located 4 km from Britannia Park and is suitable for biking, walking, and horseback riding.

All stays must be pre-booked and prepaid before the arrival date.

The campsite is available for day visits, short stays, or long stays. We welcome use for Guiding events, school groups, families, organisational groups, corporate groups, clubs, functions, public gatherings, and weddings. We offer reasonable rates for accommodation and camping, and if you would like exclusive use of the entire park, we also offer whole-site bookings.

There are four main entrances to the park. The primary entrance is located at 210 Britannia Creek Road, which can accommodate small buses. Coach bus entry is available at the Tarrango Road entrance. Additionally, there are four PA gates on Guidehouse Road for access to the campgrounds.

All lodges are equipped with fully functioning kitchens, including ovens, microwaves, fridges, plates, bowls, utensils, and cookware. BBQs are available for hire at all lodges. Lodges have laundered fitted sheets on the beds, but guests must bring their own pillows, sleeping bags or doonas, towels, and toiletries.

For Girl Guide activities, bookings can be made through adventure@guidesvic.org.au. An OUT.01 form must be submitted to the GGV Camping and Adventure Officer at least four weeks before your group's participation.

Public activities are coordinated by Warburton Adventure Company, which offers onsite and offsite packages specialising in large groups and schools. For more information, please contact info@warburtonadventure.com.au.

Please note that Britannia Park does not offer catering, but you may use an external caterer of your choice. We can also recommend some caterers who are familiar with the park.





GENERAL INFORMATION

ARRIVALS

All guests upon arrival must check in at the Office to submit their on-site register, which they will receive when making their booking. Any safety briefings, such as those regarding weather conditions, will be discussed, and you can then collect your keys.

SAFETY AND SUPERVISION

The general safety, supervision, first aid and the wellbeing of the guests are the responsibility of the school, organisation or hirer.

EMERGENCY INFORMATION

Upon arrival, groups are briefed on camp rules, fire safety and evacuation procedures. A copy of the Britannia Park Emergency Management Plan is located in each accommodation area and around the park. The Britannia Park Emergency Management Plan is available on the [GGV website](#).

PHONES

A public phone is located outside the Office for general use; the payphone calls are free of charge. To contact emergency services, dial 000. The campsite has limited mobile phone coverage.

HEATING

All houses have hydronic heating in all of the bedrooms and living areas.

CLEANING

Each group is responsible for leaving the facilities neat and tidy. Cleaning equipment is provided. Leave furniture as you found it on arrival.

BEDDING

All lodges have laundered fitted sheets on beds, but you need to bring your own pillow, sleeping bags or doona as well as a towel and toiletries.



BREAKAGES

If you have any breakages, including damaged crockery or equipment, during your stay, please inform the manager before you check out. Breakages and damage must be paid for.

PARKING

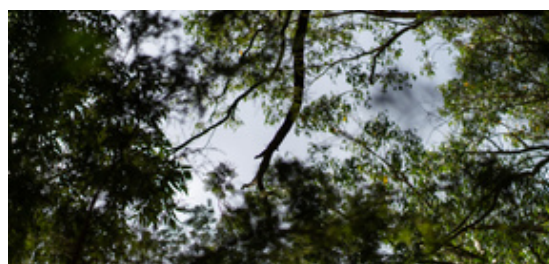
Britannia Park has two main entrances. The primary entrance is at 210 Britannia Creek Road. Here, there is a two-level car park that can accommodate a combined 40 vehicles. This entry can only be used for Cars, Utes, and small minibuses (No Coach buses).

The other main entrance is at the corner of Indigo Street and Tarrango Road. This entrance is for coach buses to drop off and pick up only. No coach bus can proceed past this carpark area due to the narrow driveways throughout the park. This parking area can accommodate approximately 20 vehicles.

All lodges have a maximum capacity of 2 cars. Bigger groups can park in the main car parks and proceed on foot to the lodges.

CAMPING

The main campground can accommodate up to 500 campers. For bigger groups using this area, enter at any of the 4 PA gates along Guidehouse Road. Here, buses can stop and let the campers out to unload their camping gear for quick access to the campground. Smaller groups can enter at the main entrance and drive down to the campgrounds. Please note that no buses can do this.

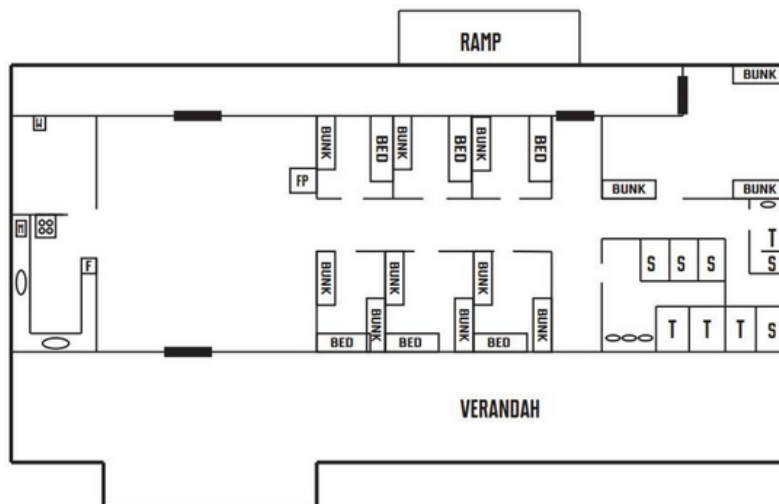


INDOOR ACCOMMODATION

Britannia Park has 85 beds of accommodation spread over 4 Lodges. Floor plans are not to scale and should be used as a guide only.

BROADHURST LODGE

30 pax.



ACCOMMODATION

Seven bedrooms; three with two bunks and a single bed (5 pax each), three with one bunk and one bed (3 pax each) and one with three bunks (6 pax total).

KITCHEN

Kitchen is equipped with five-burner gas stovetop and oven, microwave, toaster, urn and fridge/freezer.

ACCESSIBILITY

Access to Broadhurst is via a ramp. A disabled toilet and shower is located at the rear of the house.

BATHROOMS

There is a main bathroom with three showers and two toilets. There is second bathroom with toilet and shower and an additional toilet and shower to the rear of the building. The laundry comprises a trough and washing machine.

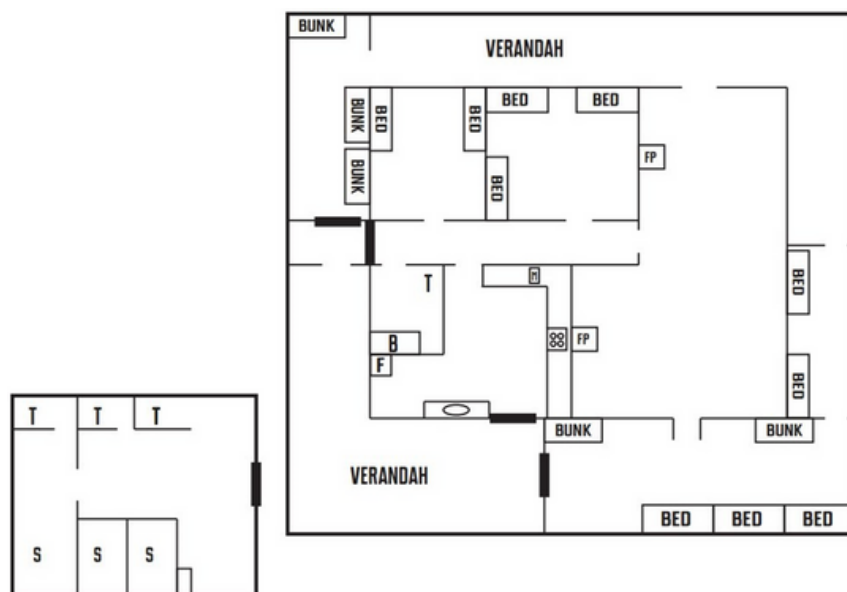
LIVING AREA

The living/dining area comprises four couches and a freestanding fireplace unit. Fold-out tables and stackable chairs are available.



BROWNIE COTTAGE

20 pax.



ACCOMMODATION

Five bedrooms; two with two single beds, one with three single beds, one with three bunks (6 pax); and, one with two bunks and three single beds (7 pax)

KITCHEN

Kitchen is equipped with four-burner gas stovetop and oven, microwave, urn and fridge/freezer.

ACCESSIBILITY

Access to Brownie Cottage is via a concrete ramp. A separate toilet/shower is located at the rear of the washroom.

BATHROOMS

The internal bathroom comprises a bath and toilet. The external washroom comprises three toilets, three showers and a trough.

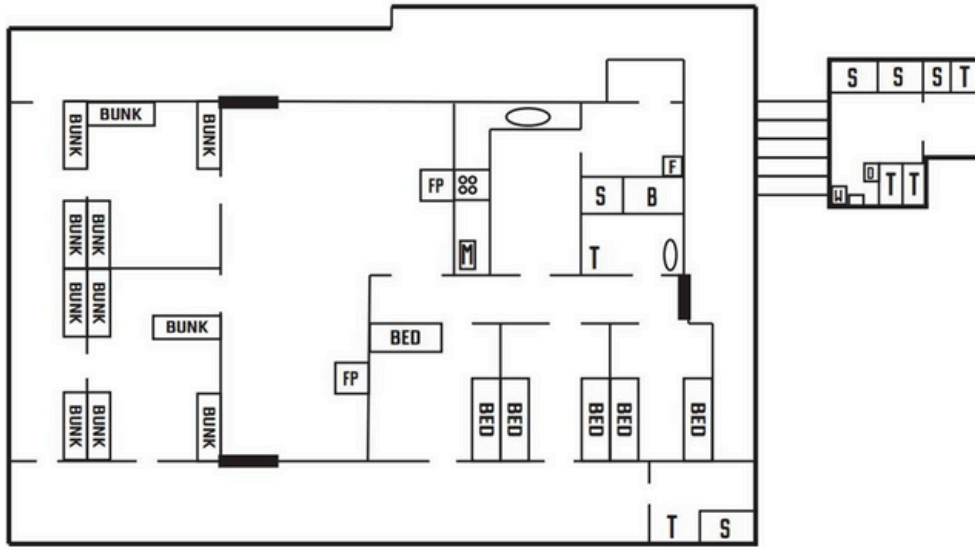
LIVING AREA

The living area comprises four armchairs and an open fireplace. The dining area has four tables, a number of stackable chairs and an open fireplace.



GUIDE HOUSE

28 pax.



ACCOMMODATION

Six bedrooms; two with four bunks (8 pax each), one with three bunks (6 pax each) and three with two single beds.

KITCHEN

Kitchen is equipped with five-burner gas stovetop and oven, microwave, toaster, urn and fridge/freezer.

ACCESSIBILITY

Access to Guide House is via an unsealed pathway. A disabled toilet and shower is located at the rear of the house.

BATHROOMS

Internally, there is a bathroom with toilet, shower and bath. Externally, there is a laundry block comprising a washer and dryer, trough, three toilets and three showers.

LIVING AREA

room comprises a four dining tables and a number of stacking chairs. Living room comprises a number of armchairs and an open fireplace.



THANK YOU CHALET

7 pax. Ideal for family stays



ACCOMMODATION

Two bedrooms; one with four single beds and one with three single beds.

KITCHEN

Kitchen is equipped with four-burner gas stovetop with oven and grill, microwave, toaster, kettle and fridge.

ACCESSIBILITY

Access to the Chalet is via an unsealed pathway and bedroom admission is via a stairway. This accommodation is not recommended for those requiring wheelchair accessibility.

BATHROOMS

Downstairs there is a toilet and shower in separate rooms. Upstairs, a toilet is available.

LIVING AREA

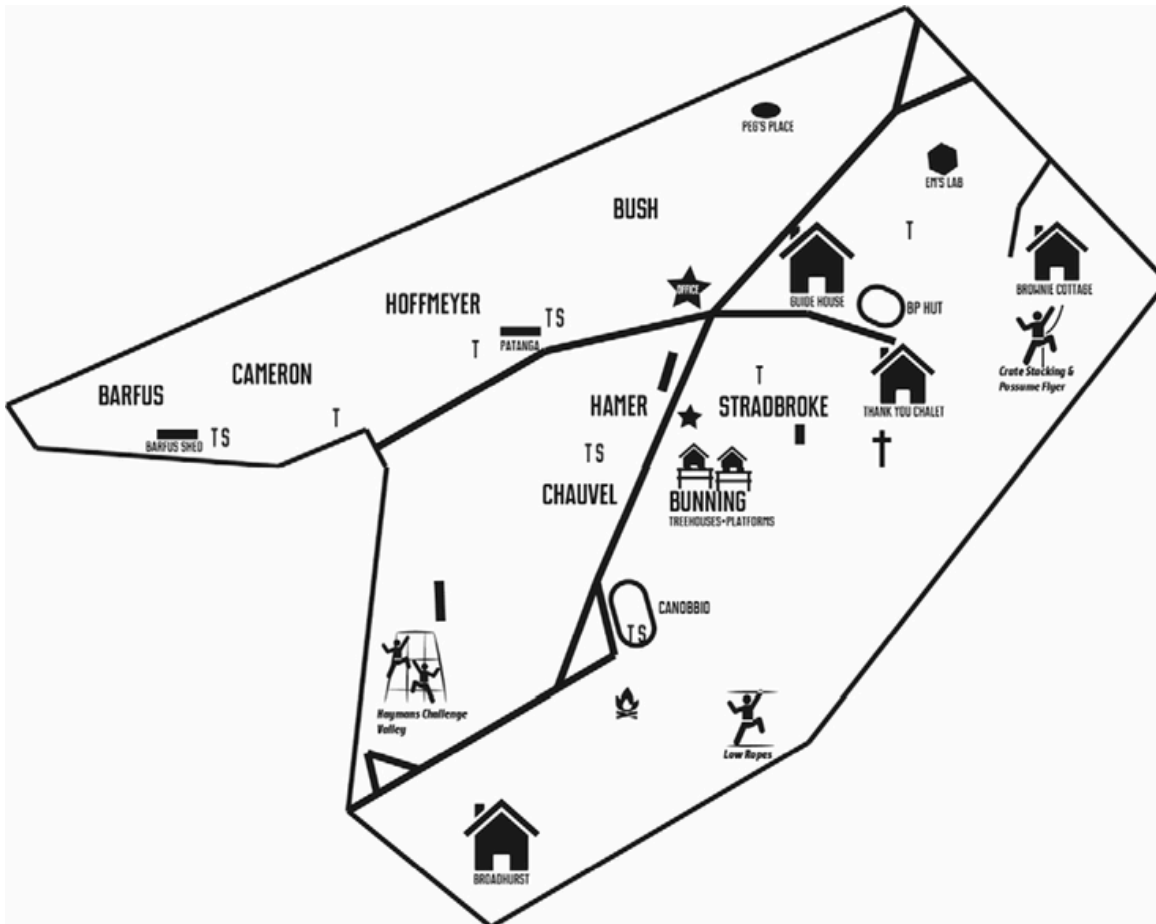
Dining room comprises a dining table and seven chairs. Living room comprises a sofa and two armchairs and a freestanding fireplace unit.



OUTDOOR ACCOMMODATION

Up to 500 outdoors.

Eight main campsites are available for groups to book – Hamer, Chauvel, Stradbroke, Bush, Hoffmeyer, Cameron, Barfus and Bunning. Each campsite has a corresponding shelter, toilet or ablution block. There is a 20-person minimum for public campground bookings. The campsites and amenities are mapped below.



BUNNING

Comprises two treehouses and three platforms for alternative camping use.

PATANGA

Has a fridge, microwave oven, showers & toilets. Located near Bush and Hoffmeyer campsites.

BARFUS SHED

Has a fridge and showers & toilets and is located near Cameron and Barfus campsites.

STRADBROKE

Stradbroke has a toilet block and a small outdoor shelter.

HAMER AND CHAUVEL

Hamer and Chauvel campsites share an ablution block with showers and toilets.



EQUIPMENT

CAMPING EQUIPMENT

ACE 10-man dome tents and cork tents are available for Guide use only at all campsites. No tents are available for public use. Fire drums and fire buckets are available at all campsites for use by both Guides and the public.

RETURNS

For Guide Group Leaders, it is their responsibility to distribute equipment to campsites and return equipment to the appropriate areas in sheds. All equipment must be returned clean and dry.

BEDDING AND LINEN

All campers must provide their own bed linen or sleeping bag, pillows, table linen, towels, tea towels, dishwashing detergent and dishcloths. Blankets are available for indoor accommodation only.

TREEHOUSES AND PLATFORMS

BOOKINGS

The Treehouses and Platforms are located on Bunning campsite (adjacent to Stradbroke) and are available at overnight outdoor camping rates. The person making the booking must ensure that users are of an appropriate fitness level to access and use these amenities. A maximum of eight (8) persons can sleep on each platform.

FACILITIES

Each Treehouse comprises two beds with a storage shelf; you must supply your own mattress and bedding.



Treehouses



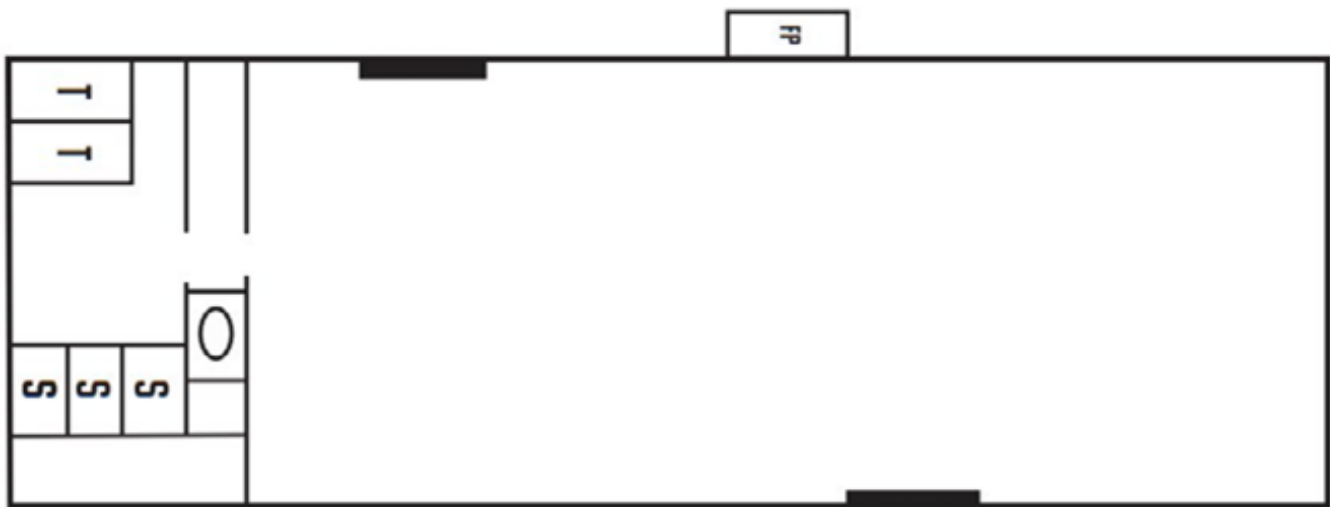
Platforms



MEETING AND GENERAL ACTIVITY AREAS

CANOBBIO HALL

Canobbio Hall is a large separate building suitable for activities, workshops, a dining room or an emergency sleep area for outdoor campers.



FACILITIES

Canobbio Hall contains three showers, two toilets and a sink. The hall is air-conditioned and has an open fireplace.



Canobbio Hall Exterior



Canobbio Hall Interior

BP HUT

BP Hut is a hall (with no amenities and a single sink) and is used for dining, activities or emergency accommodation only. It has an open fireplace back up gas heating and no air conditioning.

BBQS FOR HIRE

Each Lodge has a BBQ available for general hire. Please ensure BBQs are cleaned thoroughly after use.

CHAPEL AND QUIET PLACE

An outdoor Chapel set amongst the trees is available for use.

CAMPFIRE CIRCLE

A designated outdoor campfire location for large groups is located at the rear of Canobbio and other locations around the park. Permission from the Manager must be sought for a campfire, as there may be fire restrictions in place. Campfires can only be lit in the designated area and must be completely extinguished when finished.

HERITAGE CAMPING MUSEUM

Located adjacent to the Treehouses, the Heritage Camping Museum displays an abundance of memorabilia from the early camping days of Girl Guides. Keys can be obtained from the Office for everyone to enjoy.



BP Hut



Outdoor chapel



Campfire Circle



BRITANNIA PARK ACTIVITIES

ACTIVITY TOWER

Consisting of a double zip line (flying fox), three rock climbing walls and an abseiling wall.

POSSUM FLYER

This adventurous activity involves participants taking turns being harnessed to a rope that runs over a 14-meter-high pulley connected to their team. As the team walks the rope, the participant swings high into the air! A minimum of 8 participants, each at least 100 cm tall, is required.

CRATE STACKING

An adventurous activity run at the Possum Flyer location. Crate Stacking is a team building activity where one participant, the "Stacker," builds a tall tower by stacking milk crates while teammates pass crates and provide support. Ideal for groups of at least 8 participants aged 10 and older who are 100 cm or taller.

POSSUM PROWL

A night-time prowling through the park to spot the local marsupials.

GIANT GAMES

Giant games including giant "Jenga" and giant "Connect-4" and are available from the Office.

ICE-BLOCKING

Participants glide down a slope sitting on large ice-blocks.

HIKE TO THE FALLS

A 50-minute round trip on foot to the local Britannia Falls and underground caves.





Activity Tower



GENERAL CONDITIONS OF HIRE

Each group must have a competent leader/person in charge(hirer). The group leader/person in charge (hirer) is responsible for camper supervision, safety and first aid at all times. Britannia Park staff or their sub-contracted outdoor activity providers may instruct, lead, demonstrate or assist in an activity but the group leader is deemed to be responsible for overall group supervision.

ARRIVAL AND DEPARTURE

On arrival, the LIC or Person in charge must provide a completed camp register to receive their keys for their stay. The camp register is a form that requires the names of all guests onsite for any type of stay. **This is a legal requirement needed for accountability for all onsite.** Campers should not enter the camp prior to the allocated time and should not overstay the allocated departure time.

BEHAVIOUR

Care and common sense should be taken in all buildings. Group leaders are asked to remind campers to respect each other, personal property and the environment. **All noise/music needs stop by 11.00 pm (local by-laws).** Food and drink should only be consumed in buildings or on verandahs (no food in bedrooms). Please respect the privacy of other groups on site.

CATERING

All kitchens have an annual registration of an accommodation premises public health and wellbeing act certification issued by The Shire Of Yarra Ranges Council. Food Safety Plans are the responsibility of the group.

All appliances are "Test & Tag". Any appliances brought on site are required to be "Test & Tag" before used at Britannia Park Campsite by commercial caterers working on site. It is the responsibility of the Hirer to ensure the caterer has appropriate insurance certificate, food registration and food safety plans.

CLEANING BEFORE DEPARTURE

All Lodges and Britannia Park are to be left in a clean and neat condition by guests/ campers. All groups are responsible for cleaning and maintaining all areas in a hygienic manner during their stay. If any part of the site is left in disarray, there will be an additional cleaning fee charged.

DRINKING WATER

Drinking water is mains supply.

FIRST AID

First aid is the responsibility of campers. Campers must provide their own first aid equipment and trained staff. There is an AED onsite located at the front deck at office entrance.



SMOKING

There is strictly no smoking on the property, including indoors.

ANIMALS

No animals permitted. This includes no dogs on leads.

EMERGENCY PROCEDURES

The [Britannia Park Emergency Management Plan](#) is available on the GGV website. Emergency procedure notices are posted throughout Britannia Park and campers should make themselves familiar with the arrangements and Evacuation Points clearly signed around the site.

Fire Fighting Equipment, including extinguishers, fire hoses and smoke detectors are vital and are located around the site. These should not be tampered with or removed.

No fires or BBQs may be lit on the property without the consent of the Manager.

FIRE DANGER RATING

Every day during the fire season, the Bureau of Meteorology (BoM) forecasts an outlook of the fire danger index (FDI) by considering the predicted weather, including temperature, relative humidity, wind speed and dryness of vegetation. The Fire Danger Rating for each weather district is determined by the BoM in consultation with fire agencies. Each of the Fire Danger Ratings has recommended actions you should follow.

CODE RED (Catastrophic)- should your camp/event fall on a CODE RED day, your booking will be cancelled, and you will not be allowed on the property. If already onsite, we will evacuate the property.

EXTREME - Your camp will be reviewed 24 hours prior to your visit. If you are already onsite, BP Managers will monitor the situation and keep Group Leaders/ Public informed. The Britannia Park Manager may evacuate the property.

HIGH – Should your camp/event fall on a HIGH day, your booking will be reviewed. If already onsite, be alert to possible FIRE HAZARD changes and the possible need to evacuate the Park.

MODERATE – The Britannia Park Manager will inform all relevant parties of any updates to fire conditions or changes to bookings. If you are already onsite, the Britannia Park manager will monitor the situation and keep Group Leaders/ Public informed. BP Manager will plan and prepare for any fire danger risks.

PROPERTY

All breakages and losses to Britannia Park property or equipment are to be reported to the Britannia Park Manager. They will be invoiced to the group. Britannia Park takes no responsibility for the loss or damage to personal property. Campers are only permitted to access the buildings to which they have been allocated.



GROUP LEADERS

It is the group leader's responsibility to ensure that:

- Campers under 18 years of age must have appropriate parent/guardian consent to attend the camp.
- Each camper has completed a health/medical record sheet.
- The campsite's illness and injury register is filled out for all such incidents.
- The Campsite is provided with a written list of camper names.
- Safety issues associated with self-led off-site excursions are identified, and necessary precautions are taken.
- Campers adhere to sun safety strategies.
- Bed-wetters, sleepwalkers & campers under 6 years of age should not sleep on top bunks.
- Britannia Park Caretaker and Activity Instructors are to be informed of any camper's/participant's medical conditions or behaviour that may arise and place the campers/participants/or others at risk.

PARKING

All vehicle parking is strictly at the owner's risk and only in designated car parks. Patrons must reverse into car parking spaces.

SPEED RESTRICTIONS

Speed restriction signs are on display around the park and are strictly enforced (8km/h).

THE ENVIRONMENT

No camper is permitted to bring firearms, animals or pets onto the property or to disturb the natural environment. Garbage and recyclable materials are to be placed in rubbish bins provided.

ALCOHOL

There is no requirement to seek permission of GGV to consume alcohol on premises. However, it is trusted that all groups adhere to the following guidelines:

- Girl Guides Australia adhere to State licensing, liquor and drink driving laws and recognises it is illegal for people under 18 years of age to drink or serve alcohol.
- Girl Guides Australia does not permit alcohol at Guide functions and activities where those attending are predominantly under 18 years of age.
- Members have a duty of care not to consume alcohol while responsible for young people under 18 years of age, while in charge of adventurous activities.
- When alcohol is available at an adult-only Guide event, non-alcoholic drinks should also be provided.

NOISE LEVELS

We would ask that you are sensitive to needs of neighbours and other campers. Be alert to noise levels and late-night "revelry" that may become a disturbance to others. Amplified music to cease by 11pm as required by the Shire.



OUT OF BOUNDS AREAS

Workshops, residences and other areas, including work sites, are strictly out of bounds. Specialised activities are 'out of bounds' to non-participants.

TENT CAMPING

Tents are not permitted under trees. Campers will be asked to relocate their tent if deemed at risk.

ACTIVITIES

Group leaders are responsible for the supervision and behaviour of campers at the activity, to and from the activity, for those campers awaiting their turn and also for any First Aid requirements.

No specialised activities are to be undertaken without the prior approval of the manager.

TERMINATING THE OCCUPANCY

Britannia Park reserves the right to terminate the occupancy without notice for breach of the General Conditions for Hire. Britannia Park Manager is empowered to take action as deemed necessary for the proper conduct of the camp.

AGREEMENT

By paying a deposit or confirming your booking, you have agreed to comply with the conditions outlined above.

